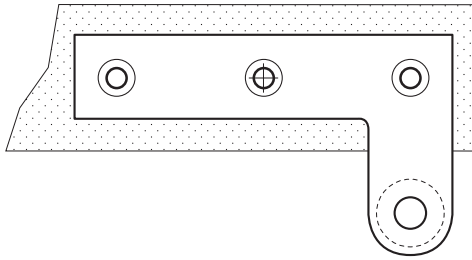


Rockwood CP10HD

Standard Head Pivot

Heavy Duty 1/2" Thick for Wood Doors Engineered to be Used in Conjunction with Offset Floor Pivot

Experience a safer
and more open world



SPECIFICATIONS:

MATERIAL:

Solid Brass Leaf, Stainless Steel Pin

FASTENERS:

6 ea. #12 x 1 1/4" Flat Head Wood Screws

FEATURES:

- Mostly concealed when installed
- Includes plastic washer for smooth silent operation
- Handing is field selectable
- Heavy Duty (HD) is made from 1/2" thick brass.

ORDERING:

Specify door thickness.

Where applicable please use NFPA 80 6.4 guidelines in determining the number and locations of pivots.

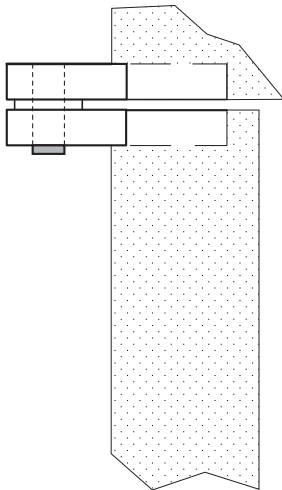
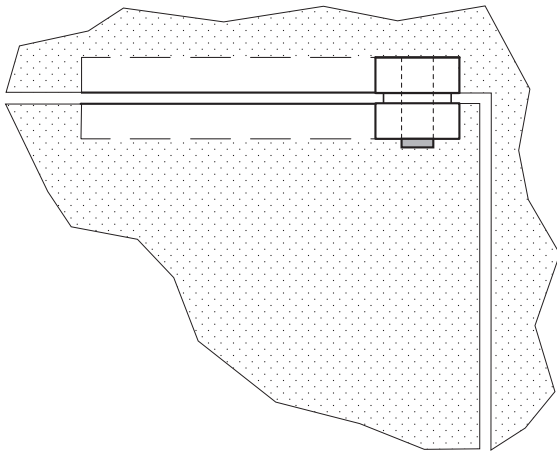
**Modifying construction or components of Custom Pivot Assembly can impact performance and will void manufacturer's warranty and liability.

AVAILABLE FINISHES:

- US3/605
- US4/606
- US10/612
- US10B/613
- 10BE/613E
- US26/625
- US26D/626
- BPC (Black Powder Coat)
- BSP (Black Suede Powder Coat)
- FBPC (Flat Black Powder Coat)
- WPC (White Powder Coat)
- WSP (White Suede Powder Coat)
- Stock Powder Coats

Material Size: 1/2" thick for doors up to 300 lbs., and maximum 48" wide.

Weight: 1.9 lbs.



Rockwood Manufacturing Company
300 Main St.
Rockwood, PA 15557
www.rockwoodmfg.com
1 800 458 2424

Copyright © 2019-2022, ASSA ABLOY Accessories and Door Controls Group, Inc. All rights reserved. Reproduction in whole or in part without the express written permission of ASSA ABLOY Accessories and Door Controls Group, Inc. is prohibited. Printed in the U.S.A.