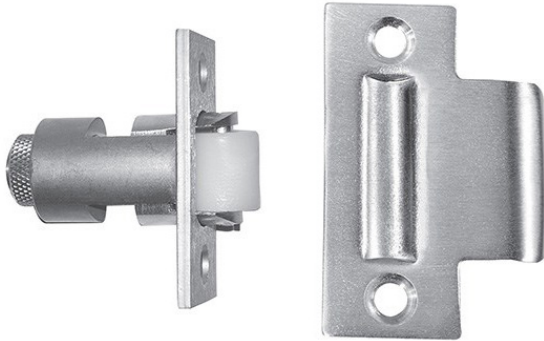


Rockwood 594 Roller Latch

Experience a safer
and more open world



SPECIFICATIONS:

MATERIAL:

Cast Brass

NOTE: There are ferrous and non-ferrous components within the material composition of the product.

FASTENERS:

Body: 2 ea. #8 x 3/4" Flat Head Combo Screws

Strike: 2 ea. #8 x 3/4" Flat Head Combo Screws

FEATURES:

- Solid nylon roller for durable silent operation
- Simple adjustment for roller projection

AVAILABLE FINISHES:

- US3/605
- US4/606
- US10/612
- US10B/613
- 10BE/613E
- US26/625
- US26D/626
- US15/619
- BSP (Black Suede Powder Coat)
- WSP (White Suede Powder Coat)
- Stock Powder Coats

Size:

Strike: 1 1/8" x 2 3/4"

Latch Face: 1 1/8" x 2 1/4"

Weight: 0.7 lbs.

Rockwood Manufacturing Company
300 Main St.
Rockwood, PA 15557
www.rockwoodmfg.com
1 800 458 2424

Copyright © 2019-2022, ASSA ABLOY Accessories and Door Controls Group, Inc. All rights reserved. Reproduction in whole or in part without the express written permission of ASSA ABLOY Accessories and Door Controls Group, Inc. is prohibited. Printed in the U.S.A.