

# Ultraline 7440 Electric Strikes



WOOD

HOLLOW  
METALUL 1034  
BURGLARY  
LISTEDELECTRIFIED  
PRODUCTGRADE 1  
E09321

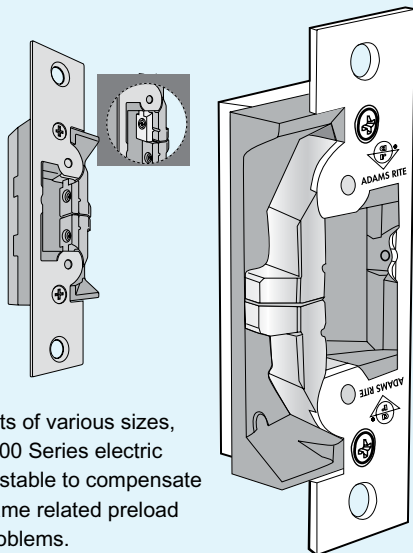
Intertek

7440 Electric Strikes with 4-7/8" faceplate are designed for Adams Rite deadlatches or cylindrical locksets with 1/2" to 5/8" latchbolt projection. For use in hollow metal or wood door jambs and steel or wood doors. Opens electrically under 35lbs. of preload.

## Function

Remote electrical control of any door equipped with an Adams Rite 4500, 4700, or 4900 Series (or similar) Deadlatch or cylindrical (key-in-knob/lever) type lockset with 1/2" to 5/8" latchbolt projection. Electrical actuation unlocks strike jaw, releasing latchbolt so door can be opened without operating latch itself. Extremely compact mechanism fits into jamb sections as shallow as 1-1/16". Direct upgrade for Adams Rite 7140 Electric Strikes.

This non-handed strike features an ultra-compact design and an adjustable stainless steel split-jaw with over 1500 lbs. of holding force in fail-secure mode. The strike releases electrically with up to 35 lbs. of door "preload" (pressure exerted on doors by air conditioning systems, warping or misaligned hardware which can disable common electric strikes). Single solenoid operates on 12, 16, or 24 volt AC/DC power. Strikes are equipped with a quick connect plug-in type connector.



Using jaw inserts of various sizes, the Ultraline 7440 Series electric strikes are adjustable to compensate for door and frame related preload and security problems.

## Specifications

### FAIL-SAFE/FAIL-SECURE

- Field selectable at time of installation.

### CASE

- Approximately 1" x 3-3/8" x 1-1/16" deep.

### STRIKE LIP

- Basic 7400 electric strike has lip of proper length for 1-3/4" thick door that closes flush with jamb edge. Where door thickness or jamb shape differs from this standard relationship, lip extension kits are available.

### STRIKE OPENING

- 5/8" adjustable x 1-7/16" x 1/2" deep. Bolt retainer jaw is stainless steel. Strike accepts bolt of Adams Rite 4500, 4700 (discontinued), or 4900 Series Deadlatch or cylindrical latches.

### FACEPLATE

- Measures 1-1/4" x 4-7/8". Faceplate is flat, with square corners. Available in a wide range of architectural finishes.

### VOLTAGE

- Field selectable to match power source of 12, 16, or 24 VAC/VDC.

### CURRENT DRAW/AMPS

VOLTS	AC INTERMITTENT	DC CONTINUOUS
12	0.163	0.440
16	0.228	0.458*
24	0.084	0.230

\*Requires 16 DC adapter (P/N VA 7400-16VDC)

### STANDARD PACKAGE

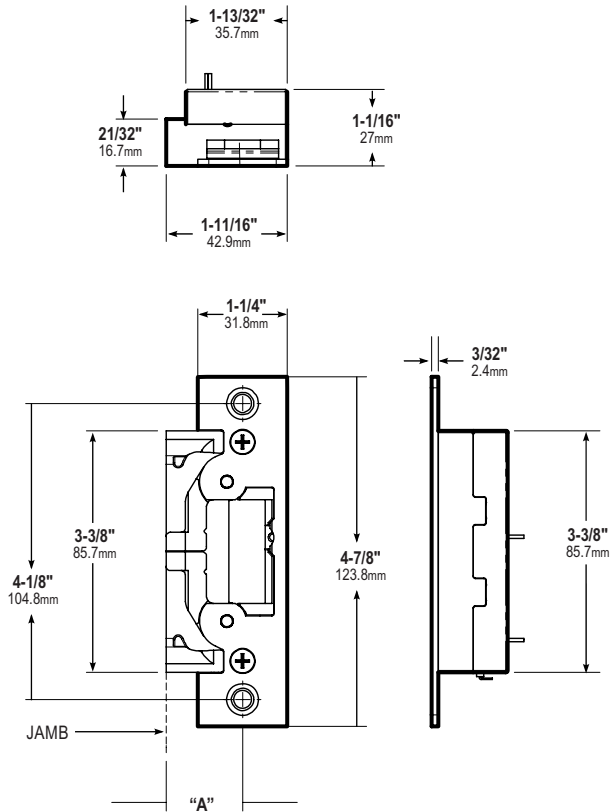
- Individually boxed with mounting screws, mounting tabs, adhesive shims to accommodate jamb or stile extrusion thickness greater or less than nominal 1/8", and adjustable jaw shim pack and two plug-in voltage adapters for 12/16/24 VAC and 12/24 VDC.

### OPTIONS

- Monitoring – Two internally mounted switches (Form "C") to indicate when the latchbolt is engaged in the strike jaws and a locked/unlocked solenoid status.
- Lip Extension Kits – For various dimensions of door centerline to jamb edge.
- Modular Packaging – Consult factory or sales representative for details.
- Wood Door Cover – WDC7400 for use when mounting the 7400 Series Electric Strike on the inactive leaf of a pair of door. The cover simplifies the mortise prep.
- ELX-ElectroLynx™ Adapter – Connects Adams Rite electrified products to ElectroLynx system.
- 16 VDC Adapter – VA7400-16VDC required when using 16 VDC power.

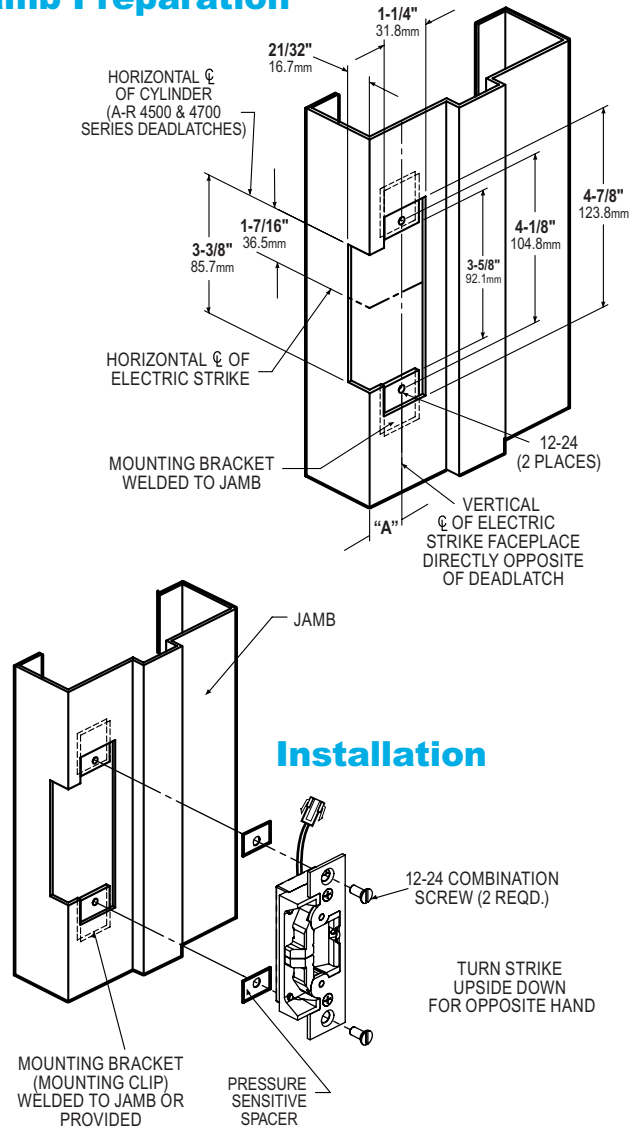
All measurements are approximate and are provided for informational purposes only. Refer to the product Installation Instructions.

### Dimensions



STANDARD UNIT FITS DIM. "A" UP TO 1-1/16" MOUNTING BRACKETS FURNISHED

### Jamb Preparation



### Installation

### HOW TO ORDER 7440 ELECTRIC STRIKE

Specify quantity and the following information. Order related products separately.

PRODUCT NO.	FEATURES	FINISH	
<b>7440</b>	<b>M</b>	<b>628</b>	
	- None	<b>STANDARD FINISHES</b>	
	<b>M</b> Monitored	<b>313</b> Dark Bronze Anodized	<b>612</b> Satin Bronze
		<b>335</b> Black Anodized	<b>628</b> Clear Anodized
		<b>605</b> Bright Brass	<b>629</b> Bright Stainless
		<b>606</b> Satin Brass	<b>630</b> Satin Stainless

Fail-secure can be field converted to fail-safe or vice-versa.

### RELATED PRODUCTS

When purchasing this product, please consider the following related products, available separately:

#### Options

Lip extensions.  
WDC7400-Wood Door Cover.  
ELX-ElectroLynx™ Adapter.  
VA7400-16VDC Adapter.

#### Power

4603 Rectifier, 4605/4606 Transformer, Piezo Horn audible indicator, PS-1.

#### Deadlatches

4500 and 4900 Series Deadlatches. Note that 4700 Deadlatch is discontinued and replaced by 4900 Deadlatch.