

NOTE: Depending on models ordered, delay times may vary

SPECIAL NOTES and DEFINITIONS

- 1. The door needs to be closed to test the unit.
- 2. When operating the ON/OFF switch, there is a slight delay.
- 3. The key is inserted and removed only in the vertical position (home position).
- 4. Key function: counter clockwise (CCW) = Armed; clockwise (CW) = Disarmed
- 5. The power needs to be disconnected to register changes in the slide switches.
 - a. Status Indicator (This will affect battery life on battery only installations if loss of AC power)
 - b. Disable Auto Rearm
 - c. Lo Bat Disable (AC powered units only)
- 6. There will be resistance turning key CCW. Turn through resistance.

UNIT ARMING TEST:

- 1. Turn key counterclockwise (CCW) (key is removable after rotating back to vertical position)
- 2. Red LED will flash twice, then green LED will illuminate for the 15 second delay time, then turn off.
The siren will sound three short beeps indicating the unit is armed.
- 3. Open door (Siren will sound and red LED will illuminate)
- 4. Turn key clockwise (CW). Turns alarm off.

TAMPER SWITCH

- 1. All four mounting screws must be installed as per the installation instructions.
- 2. Once the unit is armed, removal of the screw holding the tamper switch will cause the unit to go into alarm.

LOW BATTERY ALERT:

- 1. Siren will beep and red LED will blink at approximately 45 second intervals when battery is low
- 2. Slide the "Lo Bat Disable" switch towards the green terminal block to disable the low battery alert on AC powered units.

STATUS INDICATOR

- 1. Slide the switch to ON and then, apply power.
- 2. If the unit is armed, the red LED will blink.
- 3. If the unit is disarmed, the green LED will blink.

Disable AUTO REARM

- 1. Slide switch to OFF and then, apply power.
- 2. Once the unit is in full alarm and the door closes, the alarm will rearm after 2 minutes.

REMOTE

- 1. Terminals 3 & 4 of the terminal block can be connected to a normally open switch.
- 2. This allows authorized door access from a remote location.

CALL BELL

- 1. Terminals 7 & 8 of the terminal block can be connected to a normally open switch.
- 2. Actuating the switch will cause a (3) second actuation of the siren.
- 3. This feature is available in both armed and disarmed states.



Detex Corporation, 302 Detex Drive, New Braunfels, Texas 78130-3045
(830)629-2900 / 1-800-729-3839 / Fax (830)620-6711
E-MAIL: detex@detex.com INTERNET: www.detex.com

INSTALLATION INSTRUCTIONS FOR EAX-2500 EXIT ALARM

SI=Status Indicator
L9=Less 9V Battery

Basic Connections

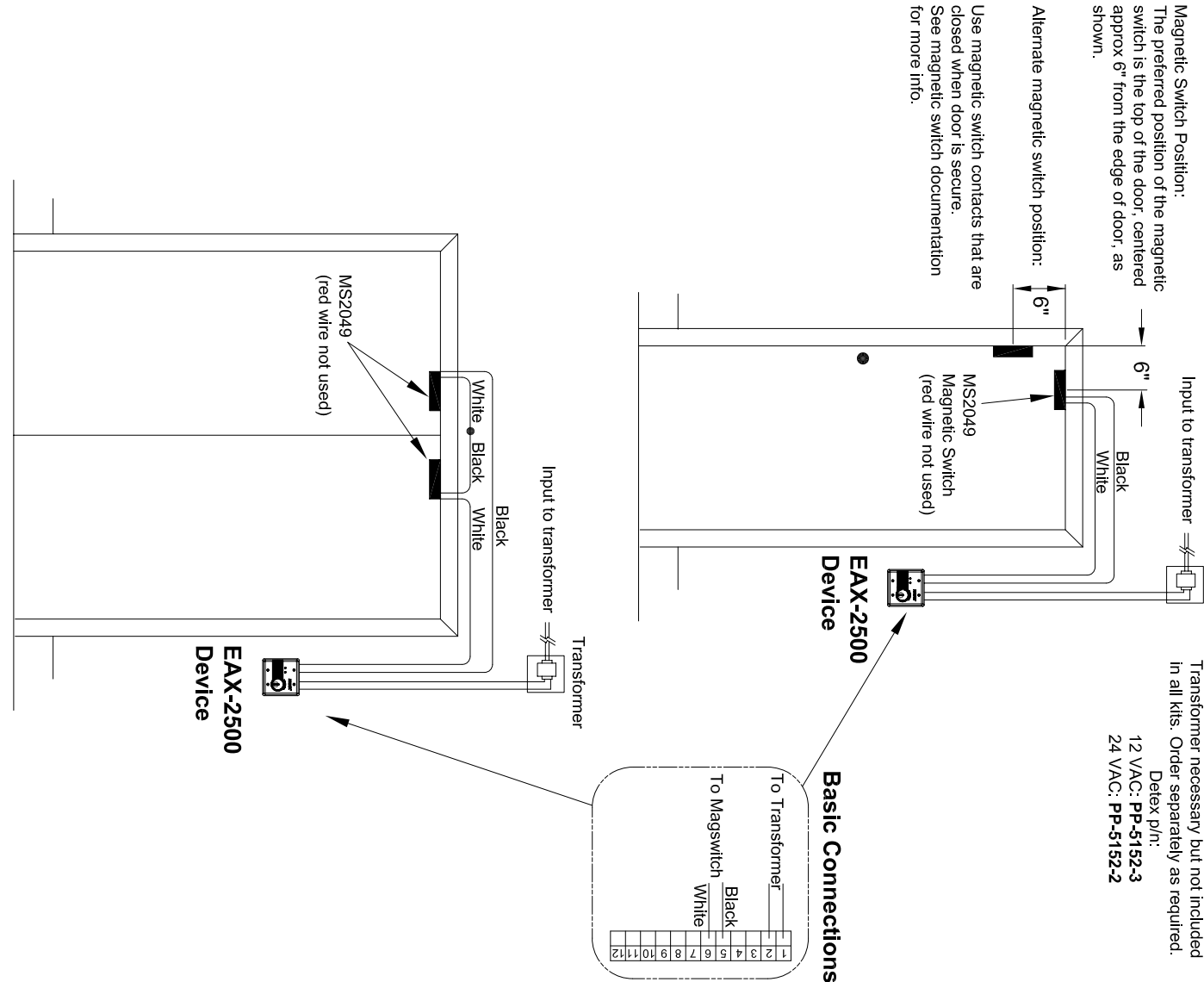
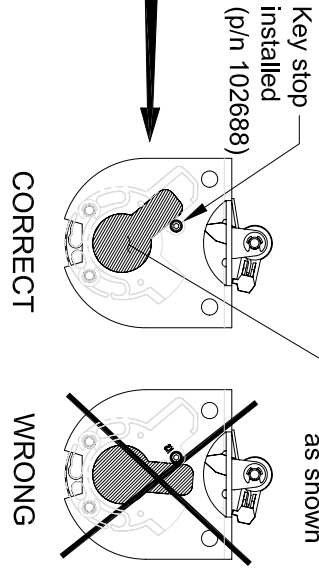
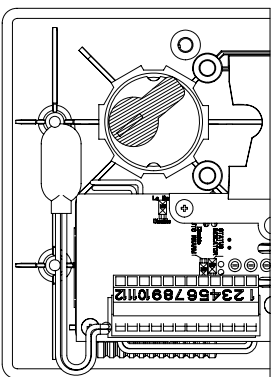
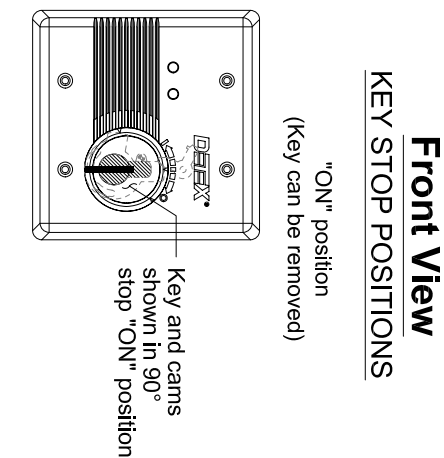
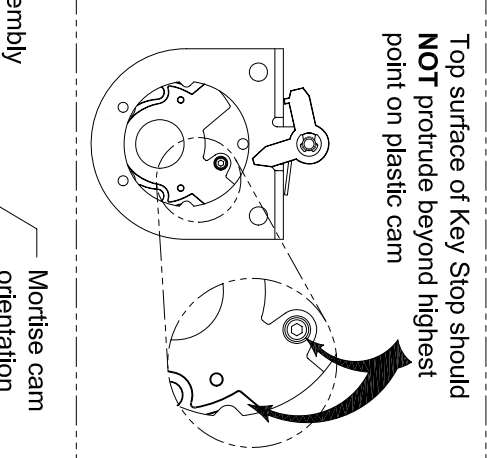
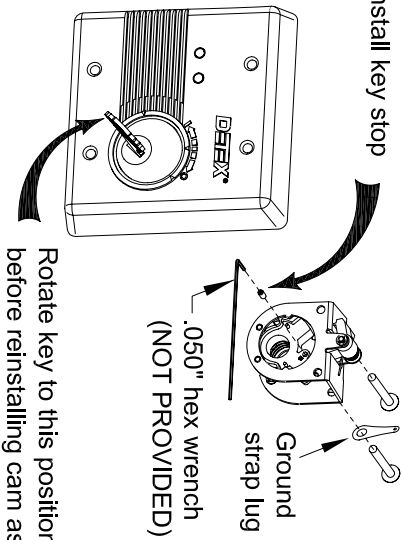


Figure 5: KEY STOP INSTALLATION
(Key stop included in hardware kit)



Cam orientation
for Key Stop option

Back View

EAX-2500 INSTALLATION INSTRUCTIONS

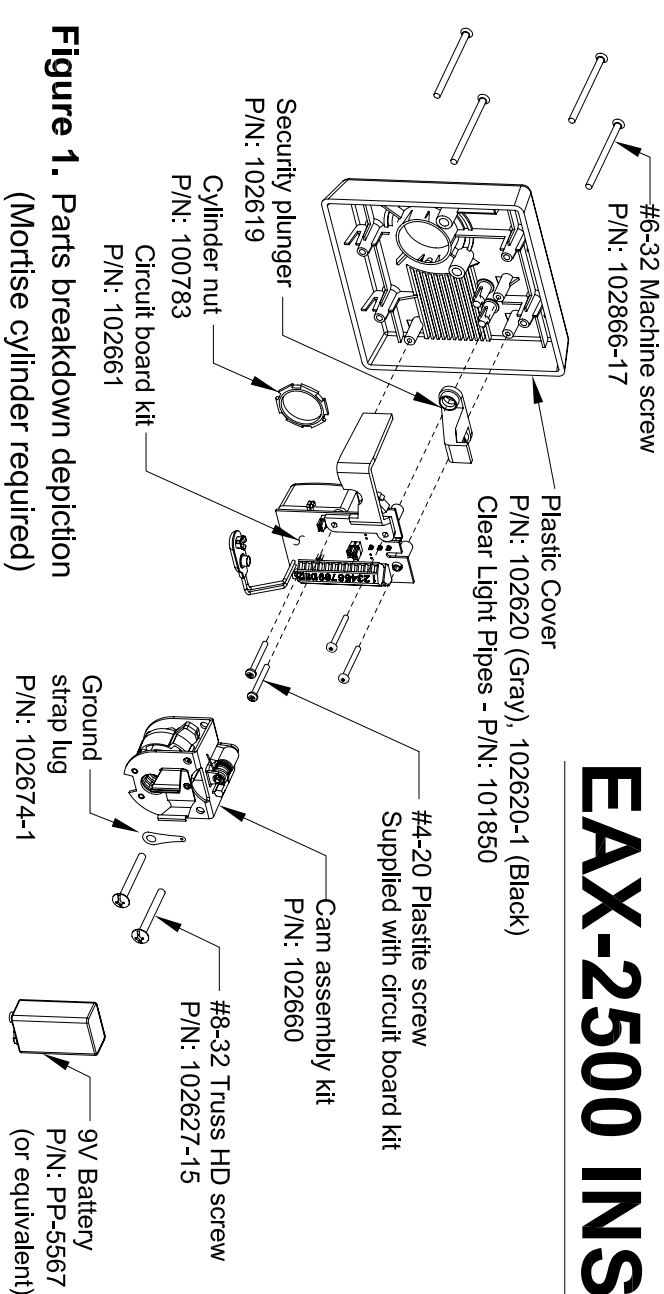


Figure 1. Parts breakdown depiction (Mortise cylinder required)

1. Supplied ground strap **MUST** be connected from back box.
2. Back box **MUST** be grounded per National Electrical Code requirements.
3. Ground strap **MUST** be as short as possible.
4. Units are shipped with ground strap installed.

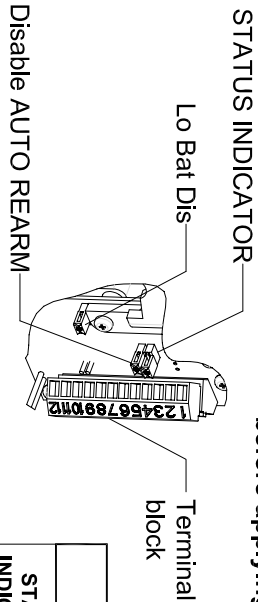


Figure 2. Selector switches

Table 1	
STATUS INDICATOR	STATUS DESCRIPTION
Off *	No indication that device is disarmed or armed.
On	ARMED- red LED blinks approximately every 15 seconds. DISARMED- green LED blinks approximately every 15 seconds.

Table 2	
Disable AUTO REARM	AUTO REARMING
Off	Alarm will automatically rearm 2 minutes after alarm has been activated , and door closed Custom settings can be programmed by DETEX.
On *	Alarm will not automatically rearm after alarm has been activated.

Table 3 (AC power must be applied)	
Lo Bat Dis	Disable low battery warning
On	No indication of battery being low
Off *	One red LED flash & one chirp about every 45 seconds

1

Remove cam assembly from cover

2

Install mortise cylinder with cylinder nut provided
NOTE: For "Key Stop", See Figure 5

Mortise cylinder NOT provided

Unfasten (2) screws

7-pin cylinders ONLY

Collar required if distance is greater than 5/16".
Optional collar can be ordered from Detex (p/n: ECL-1595)

Cam orientation as shown

Diagram showing cam orientation

3

Re-install cam assembly

Ground strap connection (note orientation)

Diagram showing ground strap connection

4

Install wiring functions (See Figure 2 & Table 4)

Terminal Block and Selector Switches (See Figure 2 and Tables 1,2,3,& 4)

Diagram showing wiring connections

5

Install 9-volt battery

Diagram showing 9-volt battery installation

STEP 6-8: INSTALL DEVICE

6

Surface Installation:
Install back box

Recommended drill size for anchors: 1/4 diameter

Mark (4) holes

Ground strap

Press-in wall anchors

Diagram showing back box installation

7

Tilt and rotate device

Install ground strap to lug before mounting unit

Dress battery wires

Diagram showing device tilting and wiring

8

Install device with (4) #8-32 machine screws

Tamper screw See Figure 3

Detex supplied or use Red Dot box Part no: Red 2IH3-1 or Detex p/n 102649-X

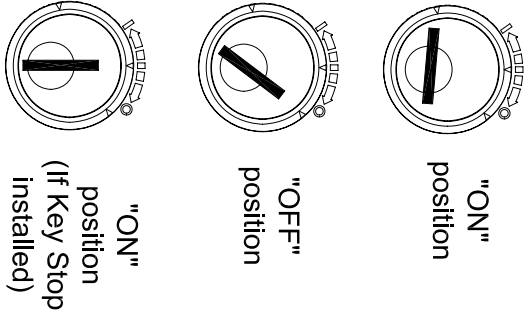
FLUSH

Diagram showing device mounting with tamper screw

Figure 3

Tamper screw detail

Figure 4
Key orientation



NOTE:

Key Stop will prevent key removal in "OFF" position

Table 4			
Terminal Block	Functions	Description	
1	Power (AC or DC+)	12-24V	
2	Power (AC or DC-)		
3	Remote Bypass (Open Contact)	Close to Activate	
4	Remote Bypass (Common)		
5	Magnetic Door Switch (Closed Contact, Door Secure)	Open to Activate	
6	Magnetic Door Switch (Common)		
7	Call Bell	Close to Activate	
8	Call Bell		
9	Spare Ground (GND)		
10	Remote Signal (Common)	Alarm Relay Contacts	
11	Remote Signal (Open)		
12	Remote Signal (Closed)		

* Default settings