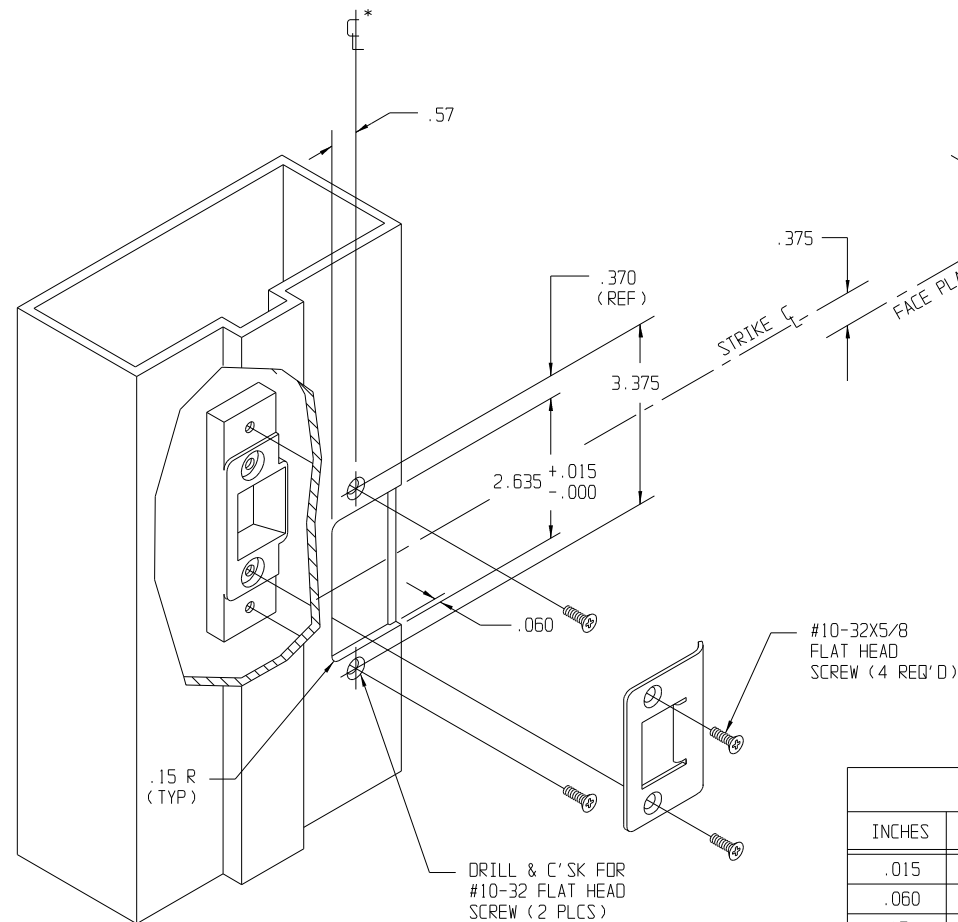


PREPARATION

NOTE: THESE DIMENSIONS AND TEMPLATES ASSUME A DOOR THICKNESS OF 1 3/4". FOR DOORS OF OTHER THICKNESS, CONSULT FACTORY.

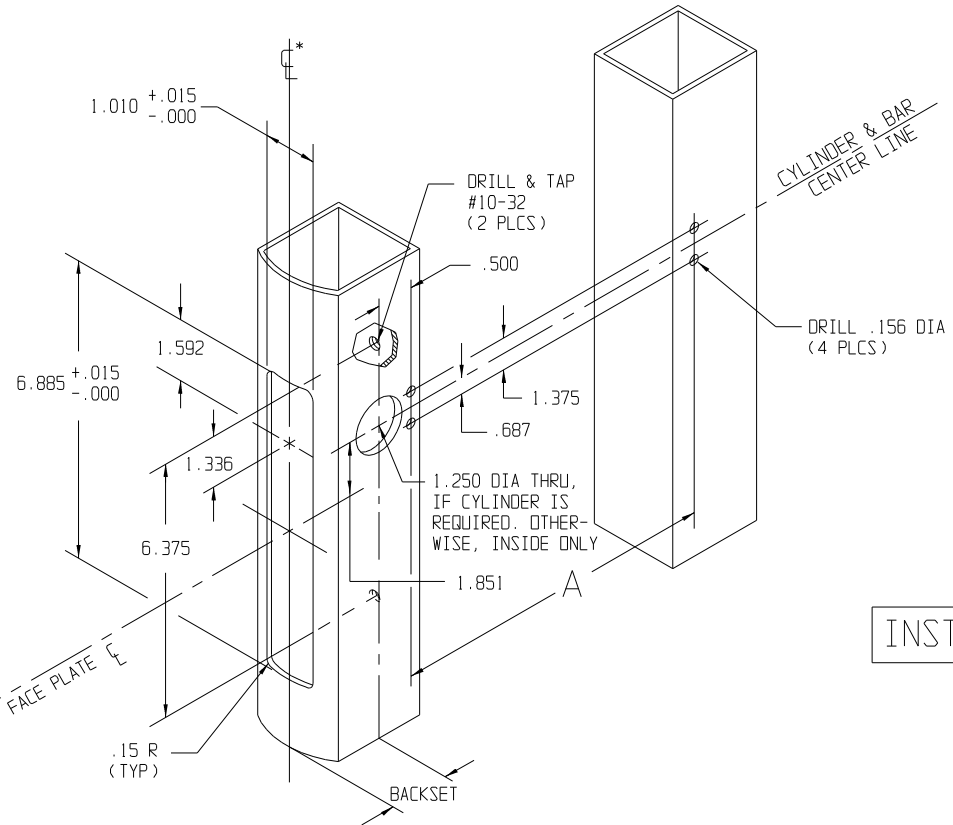
NOTE: CL^* DENOTES VERTICAL CENTER LINE OF STRIKE WITHIN .015 OF DEADLATCH CENTER LINE.



STRIKE INSTALLATION

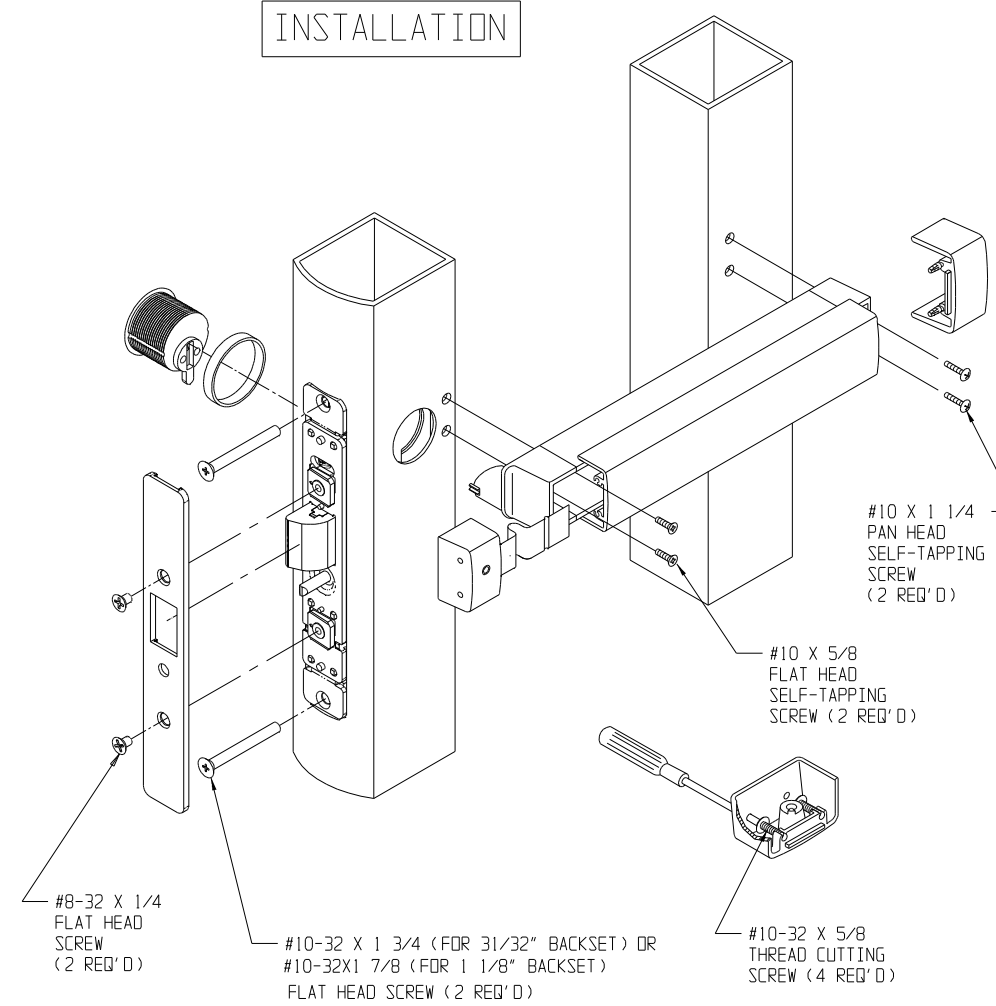
1. INSTALL CAST STRIKE CUP WITH #10-32 FLAT HEAD SCREWS.
 2. INSTALL STRIKE PLATE WITH #10-32 FLAT HEAD SCREWS.
- NOTE: BOTH STRIKE CUP AND STRIKE PLATE MUST BE INSTALLED PROPERLY TO MEET CODE REQUIREMENTS.

METRIC EQUIVALENTS					
INCHES	MM	INCHES	MM	INCHES	MM
.015	0,38	1.592	40,44	38.84	986,54
.060	1,52	1.851	47,02	42	1066,80
.15	3,81	2.635	66,93	43.57	1106,68
.250	6,35	3.375	85,73	44.84	1138,94
.370	9,40	6.375	161,93	48	1219,20
.375	9,53	6.885	174,88	1/4	6,35
.500	12,70	25.57	649,48	5/8	15,88
.57	14,48	26.84	681,74	31/32	24,61
.687	17,45	30	762,00	1 1/8	28,58
1.010	25,65	31.57	801,88	1 1/2	38,10
1.250	31,75	32.84	834,14	1 3/4	44,45
1.336	33,93	36	914,40	1 7/8	47,63
1.375	34,93	37.57	954,28		



DIM	BACKSET	DOOR OPENING WIDTH			
		30"	36"	42"	48"
A	31/32" OR 1 1/8"	26.84	32.84	38.84	44.84
	1 1/2"	25.57	31.57	37.57	43.57

INSTALLATION



DEADLATCH INSTALLATION

1. ADJUST MOUNTING POST TO LENGTH REQUIRED TO TO FLUSH FACEPLATE WITH NOSE OF STILE.
2. TIGHTEN LOCK CASE SECURELY USING #10-32 SCREWS.

PUSH BAR MOUNTING INSTRUCTIONS

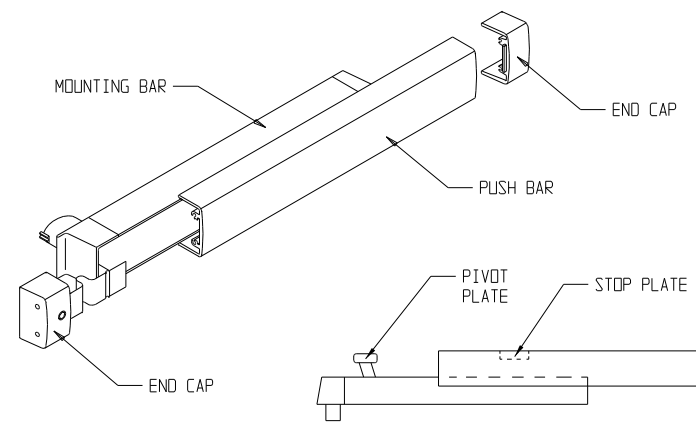
1. DEPRESS LATCH BOLT.
2. INSERT BAR ASSEMBLY CAM PLUG THRU SIDE PLATE.
NOTE: THE SQUARE KEY ON PLUG MUST ALIGN WITH SQUARE NOTCH ON SIDE PLATE.
3. INSTALL SELF-TAPPING SCREWS, BOTH ENDS, THEN, TIGHTEN SECURELY.
4. TIGHTEN CAM PLUG SET SCREW.
5. INSTALL FACEPLATE.
6. INSTALL END CAPS (DOGGING SOCKET AT LATCH END).

PRODUCT MUST BE INSTALLED ACCORDING TO ALL APPLICABLE BUILDING AND LIFE SAFETY CODES

PRODUCT MUST BE INSTALLED
ACCORDING TO ALL APPLICABLE
BUILDING AND LIFE SAFETY CODES

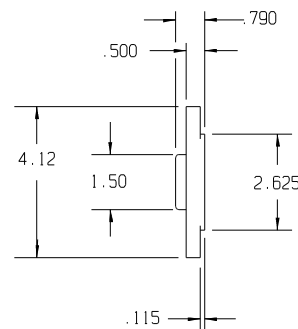
SEPARATING PUSH BAR AND MOUNTING BAR PROCEDURE

1. REMOVE BOTH END CAPS. THE RETAINER IS ATTACHED TO THE NOSE END CAP.
2. SLIDE PUSH BAR TOWARD HINGE SIDE OF DOOR.
3. CONTINUE TO SLIDE PUSH BAR PAST THE PIVOT PLATE THAT RIDES IN PUSH BAR TRACK.
4. SLIDE PUSH BAR IN OPPOSITE DIRECTION KEEPING PIVOT PLATE OUT OF TRACK UNTIL PUSH BAR IS FREE OF MOUNTING BAR.

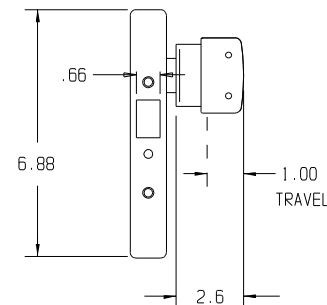


INSTALLING PUSH BAR TO MOUNTING BAR

1. WITH PUSH BAR IN HAND AND MOUNTING BAR ATTACHED TO DOOR, FIND STOP PLATE STAKED INTO PUSH BAR. (THIS PLATE IS ON THE LATCH END OF ASSEMBLED UNIT). SLIDE THE PIVOT PLATE NEAREST HINGE INTO TRACK OF PUSH BAR UNTIL SECOND PIVOT PLATE IS EXPOSED. INSERT PIVOT PLATE INTO TRACK ON PUSH BAR AND SLIDE IN OPPOSITE DIRECTION UNTIL PUSH BAR AND MOUNTING BAR ALIGN.

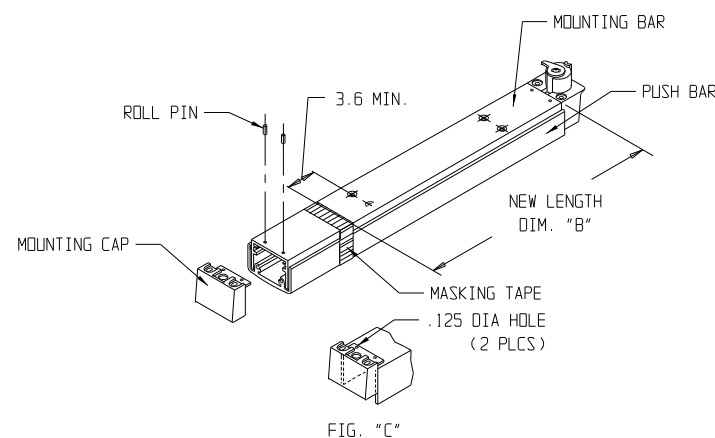


STRIKE

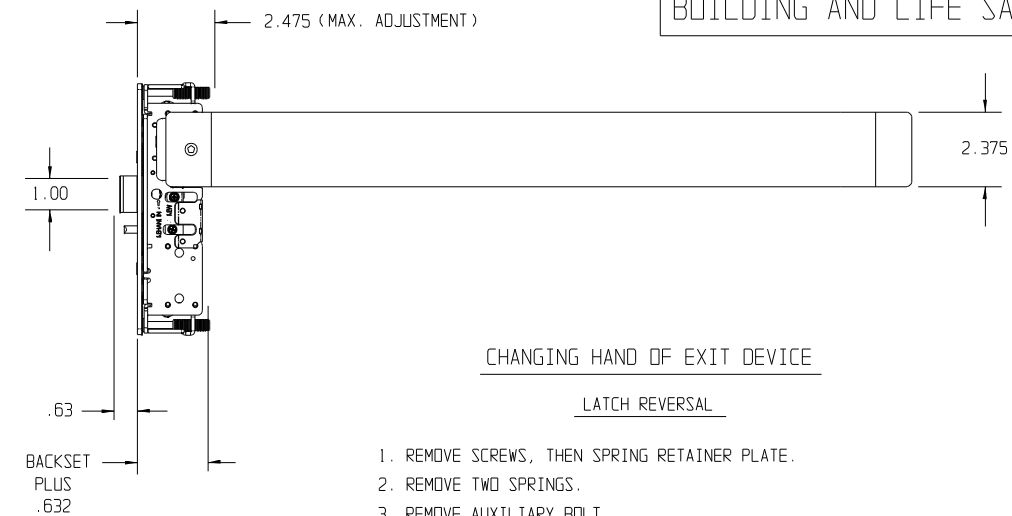


CUT-OFF INSTRUCTIONS FOR NON-STANDARD DOORS

1. DRIVE OUT TWO ROLL PINS.
2. REMOVE MOUNTING CAP.
3. COLLAPSE BAR AND TAPE DOWN IN THE AREA OF CUT-OFF.
4. DETERMINE EXTRUSION LENGTH ("B" DIM). (NOTE: 3.6" MINIMUM DIMENSION FROM RIVET CENTERLINE TO NEW CUT-OFF LENGTH AS SHOWN).
5. MEASURE MOUNTING BAR (NOT PUSH BAR), AND MARK EXTRUSION LENGTH ON TAPE.
6. SAW OFF EXCESS LENGTH, REMOVE TAPE AND DEBURR.
7. LAY MOUNTING CAP OVER MOUNTING BAR (FIG "C") AND USE AS A GUIDE TO DRILL TWO .125" DIA HOLES.
8. RE-INSTALL MOUNTING CAP INTO MOUNTING BAR AND DRIVE TWO ROLL PINS INTO HOLES.
9. SEE INSTALLATION INSTRUCTIONS.



BACKSET	DIM. "B"
31/32" OR 1 1/8"	DOOR OPENING LESS 3.73
1 1/2"	DOOR OPENING LESS 5.00



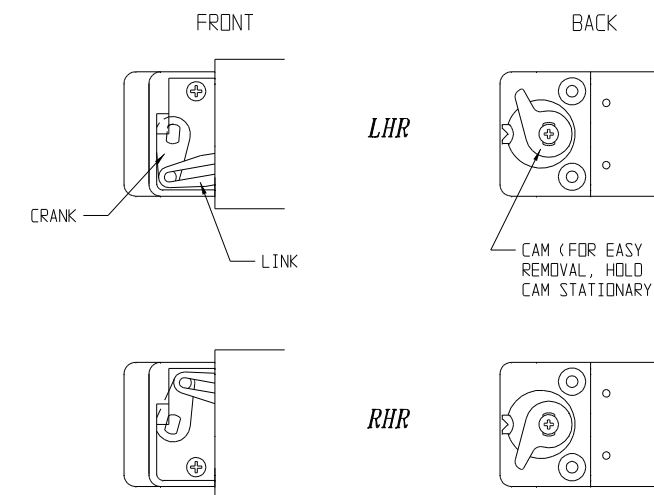
CHANGING HAND OF EXIT DEVICE

LATCH REVERSAL

1. REMOVE SCREWS, THEN SPRING RETAINER PLATE.
2. REMOVE TWO SPRINGS.
3. REMOVE AUXILIARY BOLT.
4. REMOVE LATCH BOLT AND DEADLOCKING ARM ASS'Y BEING CAREFUL NOT TO LOSE SMALL INTERNAL SPRING.
5. REMOVE INTERNAL (DEADLOCKING) SPRING.
6. SLIDE PIN OUT OF LATCH BOLT AND REMOVE DEADLOCKING ARM.
7. REPLACE DEADLOCKING ARM ON OPPOSITE SIDE OF LATCH BOLT AND INSTALL PIN.
8. INSTALL INTERNAL SPRING AND INSERT LATCH BOLT AND DEADLOCKING ARM ASS'Y INTO LATCH CASE.
9. INSTALL AUXILIARY BOLT.
10. REPLACE TWO SPRINGS.
11. INSTALL SPRING RETAINER PLATE.

METRIC EQUIVALENTS					
INCHES	MM	INCHES	MM	INCHES	MM
.115	2,92	2.375	60,33	31/32	24,60
.125	3,18	2.475	62,87	1 1/8	28,58
.500	12,70	2.6	66,04	1 1/2	38,10
.625	15,88	2.625	66,68		
.63	16,00	3.6	91,44		
.632	16,05	3.73	94,74		
.790	20,07	4.12	104,65		
1.00	25,40	5.00	127,00		
1.50	38,10	6.88	174,75		

EXIT BAR



FRONT VIEW

1. REMOVE LINK FROM CRANK ARM.
2. ROTATE CRANK TO OPPOSITE SIDE.
3. CONTINUE MOVING CRANK ARM AS YOU RELEASE BAR.

BACK VIEW

1. REMOVE CAM SCREW.
2. FLIP CAM OVER TO OPPOSITE POSITION.
3. REPLACE CAM SCREW AND TIGHTEN SECURELY.



www.adamsrite.com
Phone: 800-626-7590
800-872-3267
Fax: 866-582-4641
800-232-7329

80-0180-38

Rev. G

8400 MORTISE EXIT DEVICE

Ecn 11955B

Date: 06/27/12

INSTALLATION INSTRUCTIONS

Page 2 of 2

Appvd: MP

Date: 07/06/12