

SECURITRON MAGNALOCK[®] OPTIONS

Anti-Tamper Sensor (T)

The Anti-Tamper option provides an SPDT (Single Pole Double Throw) switch output that indicates if the wire access chamber cover has been tampered with or removed. When connected to an alarm point on an alarm panel or access control system it offers real-time notification of tampering attempts.

BondSTAT (B)

BondSTAT is the next generation of patented electromagnetic lock monitoring. BondSTAT delivers unparalleled peace of mind by detecting an armature plate and notifying access control and/or alarm systems that a door is properly secured. BondSTAT's sensitive magnetic field monitors the entire surface of the armature plate, providing maximum assurance that the lock is engaged. Movement in the armature's position beyond the set tolerance alerts the access control system that the Magalock may not be generating its full holding force.

Camera (C)

Some Securitron models offer an integrated video surveillance camera. Camera options are available in black-and-white or color with analog output for use with existing video surveillance systems.

Conduit Fitting (G)

The conduit fitting option is offered on some Magalocks that can be used for gate-mounting applications and features a 3/4" outer diameter and 1/2" inner diameter.

Door Position (D)

The DPS Door Position Switch provides a signal to an access control system indicating whether the door is open or closed. When used in conjunction with BondSTAT or Senstat, it provides layered status indication for precise information about the door state. The DPS may be ordered included with many Securitron Magalocks - or as an upgrade kit.

Face Mount (F)

Face Mount Magalock options provide the holes for the mounting bolts through the face of the magnet in a front-to-back orientation rather than through the magnet bottom-to-top.

LED (L)

The LED provides a local visual indicator of the status of the lock. On locks with the Senstat option, the LED will be green when the lock is powered but not secure, and red when the lock is secure. Locks without the Senstat option will only indicate green when powered.

Request to Exit (X)

Some Securitron Magalock models offer an integrated motion detector that automatically signals the lock to disengage when it detects approaching traffic.

Senstat (S)

Unlike commonly used door position switches that indicate only that a door is closed, Senstat detects the presence of an armature plate and notifies the access control or alarm system that the magnet is engaged. All Senstat Magalocks use Form 'C' isolated contacts.

SECURITRON

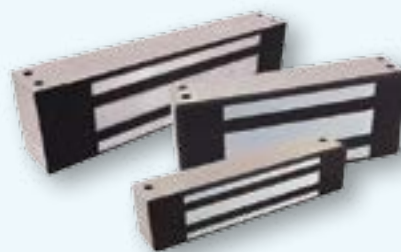
The premier supplier of electromagnetic locking solutions.

Securitron has been your trusted source for the world's best electromagnetic locks since 1971. When you choose a genuine Magnalock®, you get quality solutions for high traffic and high security applications plus MagnaCare® Lifetime Replacement No Fault Warranty.



SMART MAGNALOCKS

- **Onboard microprocessor** and incorporated sensors including PIR REX, CCTV surveillance camera, BondSTAT and door position switch reduce the number of devices to buy and install at the door
- **Sleek, low profile and refined lines** for aesthetically demanding applications
- **Patent-pending template and bracket mounting system** enable accurate alignment of magnet and armature plate for maximum holding force, installs in less than 22 minutes



ULTRA-DURABLE MAGNALOCKS

- **Lower power usage than competitor locks**, at 3 watts (less wattage than a typical nightlight), a Securitron Magnalock operates efficiently with a smaller power supply, thinner wiring and longer battery backup, consuming less energy, generating less heat and outlasting the competition
- **100% waterproof design**, shock absorbing polyurethane, stainless steel casing and plated lock face that is impervious to corrosion operate from -40F to +140F [-40C to +60C]
- Instant release circuit with no residual magnetism and no inductive kickback

All Securitron Magnalocks Include

- **Automatic dual voltage** uses 12 or 24 volt power supply and protects Magnalock
- **World-class technical support experts**, ready to assist you in selecting hardware, wiring and troubleshooting your opening
- **Collapsing blind nuts**, securely anchoring Magnalocks to the frame with 1000lbs of tensile strength
- **Excellent product quality** – Magnalocks are manufactured in an ISO9001 certified factory in Phoenix, AZ
- **MagnaCare®**, the best warranty in the industry – lifetime replacement, no fault, no questions asked



Genuine Magalock® Selection Guide

Out-Swing Door Magalock Selection Guide

Locks Mount on the Secure Side of the Door & Door Swings Away from Secure Side.
Dual Doors Will Require Two Locks (X2), One for Each Leaf Except for DM62.

PREFERRED APPLICATION = ✓

| DOOR TYPE | M32 | M380 | M62 | M680 | M82 | SAM |
|---|-----|------|-----|------|-----|-----|
| Glass Door (w/ Aluminum Frame) | ✓ | ✓ | | | | |
| Wood Door (Traffic Control) | ✓ | ✓ | | | | |
| Wood Door (High Security) | | | ✓ | ✓ | | |
| Metal Door (Traffic Control) | ✓ | ✓ | | | | |
| Metal Door (High Security) | | | ✓ | ✓ | ✓ | |
| Herculite Door (w/out Top or Bottom Rail) | ✓ | | | | | |
| Herculite Door (w/Top or Bottom Rail) | | | | | | ✓ |

In-Swing Door Magalock Selection Guide

Locks Mounted on the Secure Side of the Door & Door Swings Toward Secure Side.
Dual Doors Will Require Two Locks (X2), One for Each Leaf.

PREFERRED APPLICATION = ✓

| DOOR TYPE | M32F | M38 | M62F | M68 | M82F |
|--------------------------------|------|-----|------|-----|------|
| Glass Door (w/ Aluminum Frame) | ✓ | ✓ | | | |
| Wood Door (Traffic Control) | ✓ | ✓ | | | |
| Wood Door (High Security) | | | ✓ | ✓ | |
| Metal Door (Traffic Control) | | ✓ | | | |
| Metal Door (High Security) | | | ✓ | ✓ | ✓ |

Sliding Door Magalock Selection Guide

PREFERRED APPLICATION = ✓

| DOOR TYPE | M34R | SAM |
|----------------------|------|-----|
| Double Sliding Doors | | ✓ |
| Single Sliding Doors | ✓ | |

All Securitron Magalocks are Fail Safe Electric Locking Devices

