



ASSA ABLOY

FM-300 Edge Mount

Markar Architectural Products, Inc. a subsidiary of Adams Rite Manufacturing Co.
260 Santa Fe Street, Pomona, CA 91767 • 800-872-3267 • 909-632-2300 • 800-232-6752 fax • www.markar.com

STANDARD FEATURES

Material
Heavy-duty 14 Gauge stainless steel

Finishes
US32D Satin Stainless Steel (630)

Cycle Testing
Grade 1
ANSI/BHMA Standard A156.26

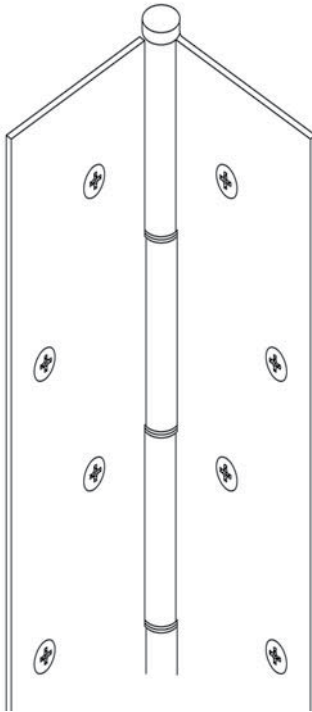
Mounting Hardware
No exposed mounting fasteners when closed
Universal screw pack

Capacity
Supports weights up to 600lbs.
4'0" maximum door width

Sizes
6'8", 7'0", 7'2", 8'0", 10'0"

Hole Pattern
Symmetrically templated
Non-handed

Barrel Type Hinge
1/4" diameter stainless steel pin
Long-life split nylon bearings



Fire Rating
3 hours- hollow metal doors mounted singly
90 minutes- hollow metal and composite core wood fire doors
20 minutes- wood doors


OPTIONAL FEATURES


Finishes
US32 Bright Stainless Steel (629)
Scratch-Resistant Powder Coated Paint

Other Features
Custom lengths- specify in inches
Custom hole pattern
Tamper-proof security screws
Dutch door hinges- suffix hinge "DD"
Hospital tips – suffix hinge "HT"
Medical Bearings – suffix "MB"
Raised barrel
Special sheared leaf

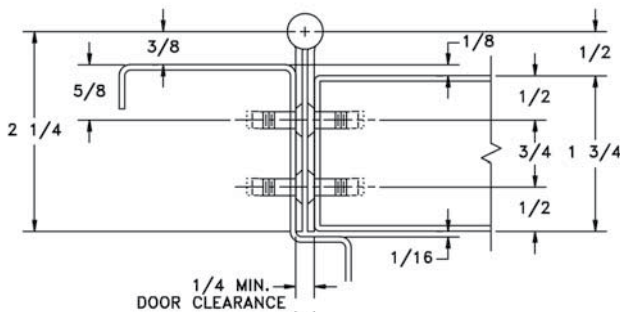
Electrical Modifications
Exposed switch with adjusting screw- suffix hinge "ES"
Current Transfer Prep - suffix hinge "CTP"
Concealed current transfer – suffix hinge "CE-4D"
Concealed current transfer – suffix hinge "CE-8D"
Adjustable monitoring switch – suffix hinge "AMS"

ElectroLYNX™
EL-8 (8 wire), EL-12 (12 wire)

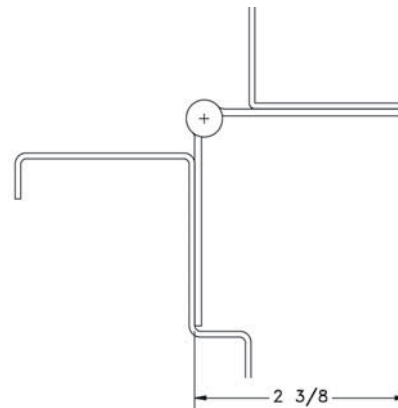
 Classified in accordance with UBC code standard 7-2 for positive pressure

 fire-rated label

This edge-mounted pin & barrel type hinge is used on many of today's high traffic, high abuse doors. The hinge works well in locations that used anchor hinges, pivot reinforcement hinges or thrust pivot unit and hinge sets. This hinge saves on special door and frame preparation charges and makes the installer's job easier. It can be used on both fire labeled and non-labeled openings.



DOOR CLOSED



DOOR OPEN 90°



FS-101 Full Surface 1/8" Inset

Markar Architectural Products, Inc. a subsidiary of Adams Rite Manufacturing Co.
68 Ward Road, Lancaster, NY 14086 * 800-866-1688 * 716-685-4104 * 716-685-3919 fax * www.markar.com

STANDARD FEATURES

Material

6063-T6 aluminum

Finishes

Clear satin (628)
Dark bronze (313)

Cycle Testing

Grade 2
ANSI/BHMA Standard A156.26

Mounting Hardware

No exposed mounting fasteners

Capacity

Supports weights up to 600lbs.
4'0" maximum door width

Sizes

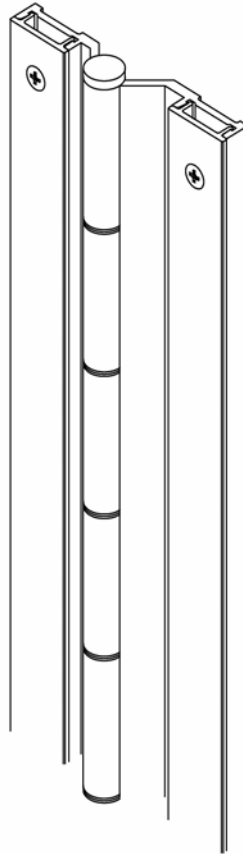
6'8", 7'0", 7'2", 8'0"

Locking Security Covers

Brushed aluminum finish

Barrel Type Hinge

1/4" diameter Teflon-coated stainless steel
pin
Long-life split nylon bearings



OPTIONAL FEATURES

Finishes

Light bronze (311)
Black (315)
Bright dipped locking security covers
Scratch-resistant powder coated paint-
84 standard colors

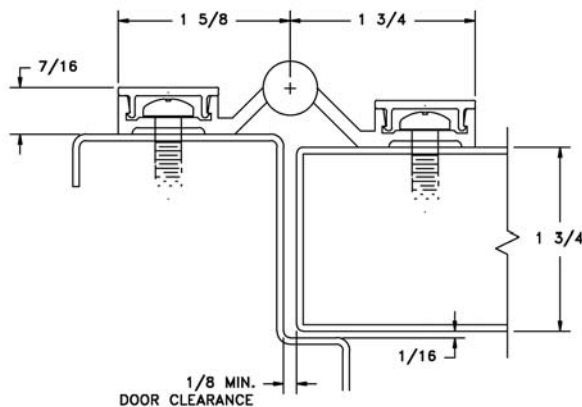
Other Features

Custom lengths - specify in inches
1 3/4" aluminum sleeve bolts
Dutch door hinges - suffix hinge "DD"
Hospital tips - suffix hinge "HT"
Lead lined cover with 1/16" lead lining -
suffix hinge "LL"

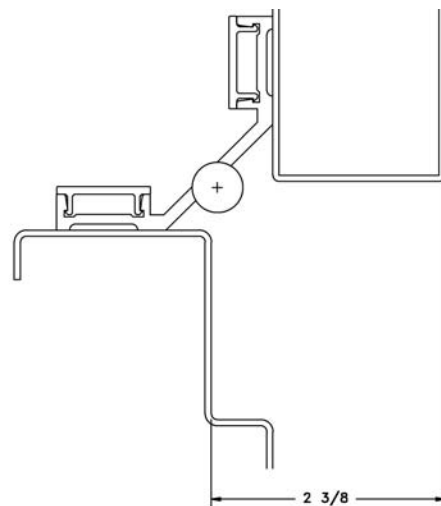
Electrical Modifications

Current transfer - 4 or 8 28 gauge wires -
suffix hinge "CE4" or "CE8"

This surface-mounted pin & barrel type continuous hinge is the correct hinge to solve door sag problems. The 1/8" inset allows perfect alignment for retrofitting hollow metal, wood or aluminum doors within the existing conditions - no need to readjust your weather-stripping!



DOOR CLOSED



DOOR OPEN 90°



FS-102 Full Surface Flush Mount

Markar Architectural Products, Inc. a subsidiary of Adams Rite Manufacturing Co.
68 Ward Road, Lancaster, NY 14086 * 800-866-1688 * 716-685-4104 * 716-685-3919 fax * www.markar.com

STANDARD FEATURES

Material

6063-T6 aluminum

Finishes

Clear satin (628)
Dark bronze (313)

Cycle Testing

Grade 2
ANSI/BHMA Standard A156.26

Mounting Hardware

No exposed mounting fasteners when closed
Universal screw pack

Capacity

Supports weights up to 600lbs.
4'0" maximum door width

Sizes

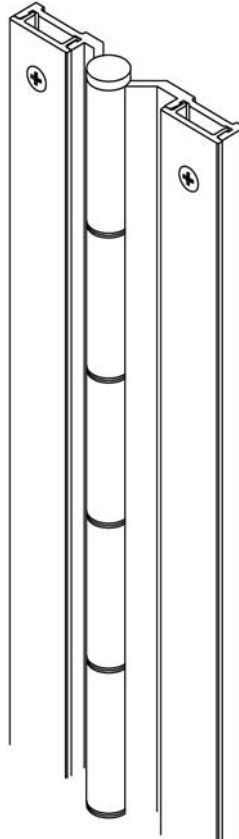
6'8", 7'0", 7'2", 8'0"

Locking Security Covers

Brushed aluminum finish

Barrel Type Hinge

1/4" diameter Teflon-coated stainless steel pin
Long-life split nylon bearings



OPTIONAL FEATURES

Finishes

Light bronze (311)
Black (315)
Bright dipped locking security covers
Scratch-resistant powder coated paint-
84 standard colors

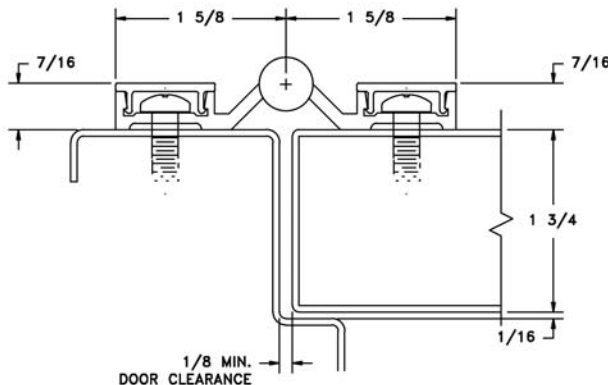
Other Features

Custom lengths - specify in inches
1 3/4" aluminum sleeve bolts
Dutch door hinges - suffix hinge "DD"
Hospital tips - suffix hinge "HT"
Lead lined cover with 1/16" lead lining -
suffix hinge "LL"

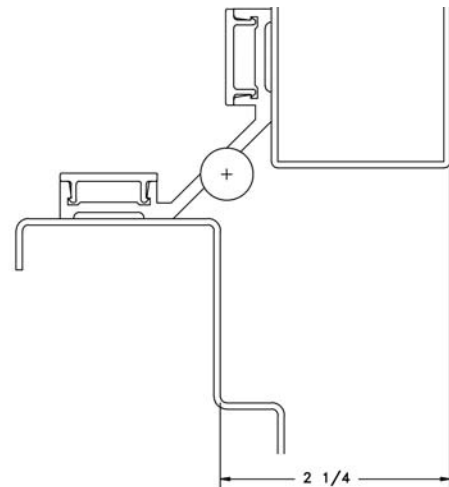
Electrical Modifications

Current transfer - 4 or 8 28 gauge wires -
suffix hinge "CE4" or CE8"

For flush-mounted doors. This surface-mounted pin & barrel type continuous hinge is the right choice for solving your door sag problems. This unit works well on all types of aluminum, wood and hollow metal door applications. The hinge also features tamper-resistant cover caps to prevent vandalism or break-ins.



DOOR CLOSED



DOOR OPEN 90°



HS-103 Half Surface

Markar Architectural Products, Inc. a subsidiary of Adams Rite Manufacturing Co.
68 Ward Road, Lancaster, NY 14086 * 800-866-1688 * 716-685-4104 * 716-685-3919 fax * www.markar.com

STANDARD FEATURES

Material
6063-T6 aluminum

Finishes
Clear satin (628)
Dark bronze (313)

Cycle Testing
Grade 2
ANSI/BHMA Standard A156.26

Mounting Hardware
No exposed mounting fasteners when closed
Universal screw pack

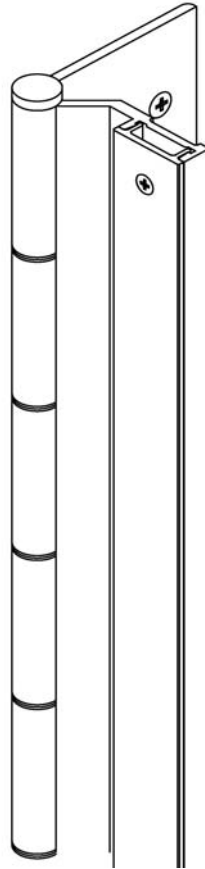
Capacity
Supports weights up to 600lbs.
4'0" maximum door width

Sizes
6'8", 7'0", 7'2", 8'0"

Locking Security Covers
Brushed aluminum finish

Hole Pattern
Symmetrically templated
Non-handed

Barrel Type Hinge
1/4" diameter Teflon-coated stainless steel pin
Long-life split nylon bearings



OPTIONAL FEATURES

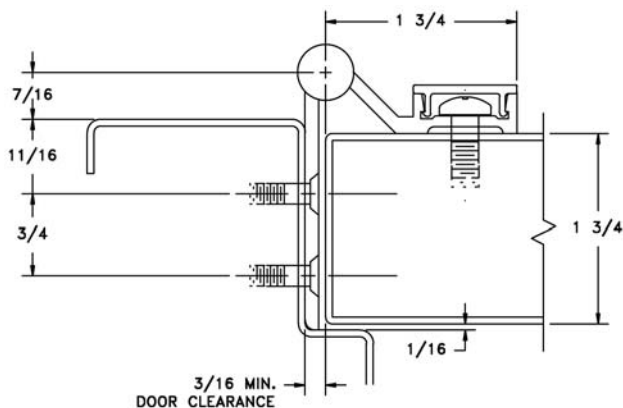
Finishes
Light bronze (311)
Black (315)
Bright dipped locking security covers
Scratch-resistant powder coated paint-
84 standard colors

Other Features
Custom lengths - specify in inches
Custom hole pattern
Dutch door hinges - suffix hinge "DD"
Hospital tips - suffix hinge "HT"
Lead lined cover with 1/16" lead lining -
suffix hinge "LL"

Fasteners
Tamper-proof security screws
1 3/4" aluminum sleeve bolts

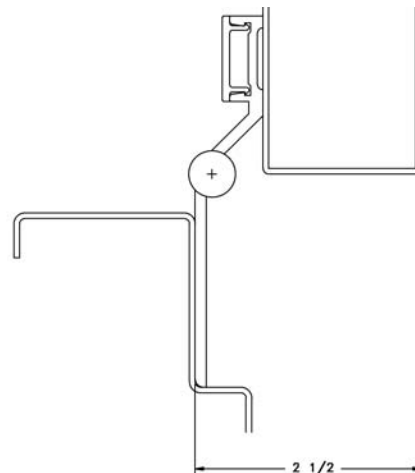
Electrical Modifications
Current transfer - 4 or 8 28 gauge wires -
suffix hinge "CE4" or "CE8"
Current Transfer Prep (frame leaf only) -
suffix hinge "CTP"

This half-surface aluminum pin & barrel type hinge can be used to repair doors that need the frame reinforced. This hinge can also be used on openings that have too large a gap between the door and frame. The hinge is surface edge mounted on the door frame.



8/02

DOOR CLOSED



DOOR OPEN 90°



HG-305 Hinge Guard

Markar Architectural Products, Inc. a subsidiary of Adams Rite Manufacturing Co.
68 Ward Road, Lancaster, NY 14086 * 800-866-1688 * 716-685-4104 * 716-685-3919 fax * www.markar.com

STANDARD FEATURES

Material

Heavy-duty 14 Gauge 304 stainless steel

Finishes

US32D Satin stainless steel (630)

Cycle Testing

Grade 1

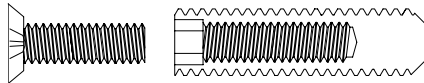
ANSI/BHMA Standard A156.26

Mounting Hardware

No exposed mounting fasteners when closed

Universal screw pack

AdjustaScrews for correcting frame fit problems up to 3/8"



Capacity

Supports weights up to 600lbs.

4'0" maximum door width

Sizes

6'8", 7'0", 7'2", 8'0", 10'0"

Hole Pattern

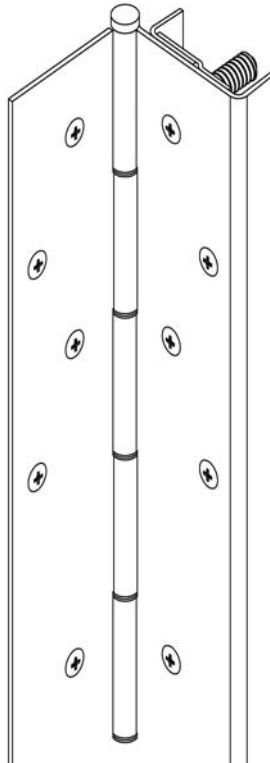
Symmetrically templated

Non-handed

Barrel Type Hinge

1/4" diameter stainless steel pin

Long-life split nylon bearings



OPTIONAL FEATURES

Finishes

US32 Bright Polished stainless steel (629)

Scratch-resistant powder coated paint-

84 standard colors

Other Features

Custom lengths - specify in inches

Custom hole pattern

Dutch door hinges - suffix hinge "DD"

Hospital tips - suffix hinge "HT"

Raised barrel

Special sheared leaf

Fasteners

Tamper-proof security screws

Electrical Modifications

Current transfer - contacts are broken when

hinge opens. 4 or 8 wires - suffix hinge

"CT4" or "CT8"

Exposed switch with adjusting screw - suffix

hinge "ES"

Current Transfer Prep - suffix hinge "CTP"

Concealed current transfer - suffix hinge

"CE-4D"

Concealed current transfer - suffix hinge

"CE-8D"

Fire Rating

3 hours- hollow metal doors mounted singly

90 minutes- hollow metal and composite core wood fire doors

20 minutes- wood doors

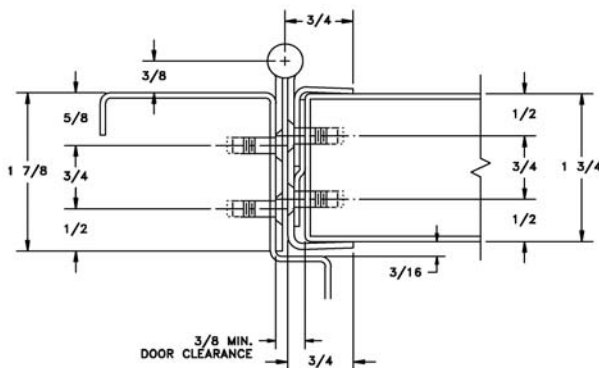


Classified in accordance with UBC code standard 7-2 for positive pressure

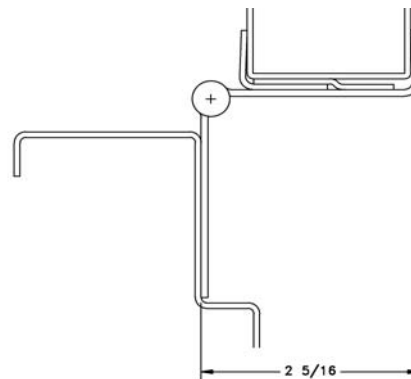


fire-rated label

This is the greatest continuous hinge ever engineered. This unique design answers the problem of adjusting doors where frames are not installed plumb or properly aligned. Not only that, but the wrap-around edge guard protects the door from unsightly dents and gouges and will deflect objects, preventing further damage. Strategically located fasteners coupled with the AdjustAScrew fastener allow the door to be adjusted up to 3/8" within the channel of the hinge and distribute the load of the door down the entire length of the jamb. The proper alignment of the door to the frame will allow your closers, panics magnetic locks, electronic strikes, and automatic operators to assist you in meeting all your life safety code requirements.



DOOR CLOSED



DOOR OPEN 90°



FS-302 Full Surface Flush Mount

Markar Architectural Products, Inc. a subsidiary of Adams Rite Manufacturing Co.
68 Ward Road, Lancaster, NY 14086 * 800-866-1688 * 716-685-4104 * 716-685-3919 fax * www.markar.com

STANDARD FEATURES

Material
Heavy-duty 14 Gauge 304 stainless steel

Finishes
US32D Satin stainless steel (630)

Cycle Testing
Grade 1
ANSI/BHMA Standard A156.26

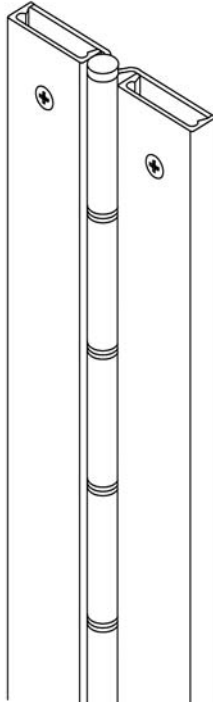
Mounting Hardware
No exposed mounting fasteners when closed

Capacity
Supports weights up to 600lbs.
4'0" maximum door width

Sizes
6'8", 7'0", 7'2", 8'0", 10'0"

Decorative Fastener Covers
Brushed aluminum

Barrel Type Hinge
1/4" diameter stainless steel pin
Long-life split nylon bearings



OPTIONAL FEATURES

Finishes
US32 Bright Polished stainless steel (629)
Scratch-resistant powder coated paint-
84 standard colors
Bright dipped fastener covers

Other Features
Custom lengths - specify in inches
1 3/4" aluminum sleeve bolts
Dutch door hinges - suffix hinge "DD"
Hospital tips - suffix hinge "HT"
Lead lined cover with 1/16" lead lining -
suffix hinge "LL"
Raised barrel

Fire Rating
3 hours- hollow metal doors mounted singly
90 minutes- hollow metal and composite core wood fire doors
20 minutes- wood doors

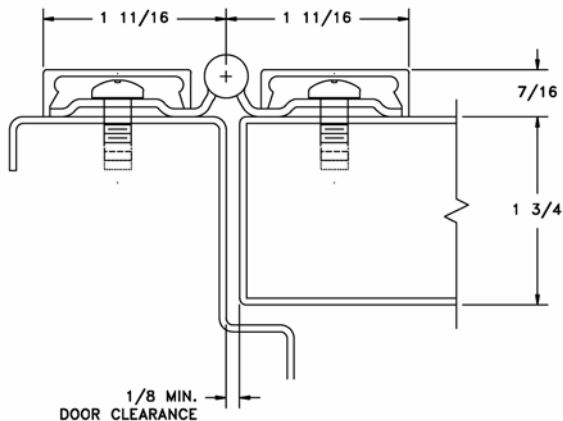


Classified in accordance with UBC code standard 7-2 for positive pressure



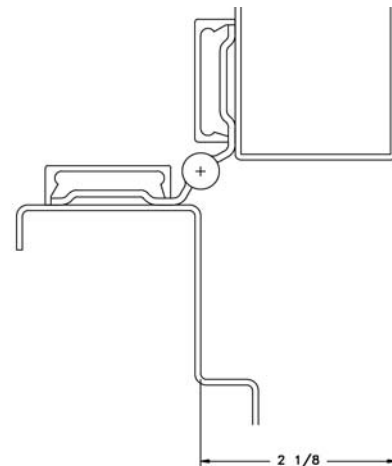
fire-rated label

For flush doors. This surface-mounted pin & barrel type continuous hinge can be used to repair both fire labeled and non-labeled doors that have very tight clearances.



8/02

DOOR CLOSED



DOOR OPEN 90°