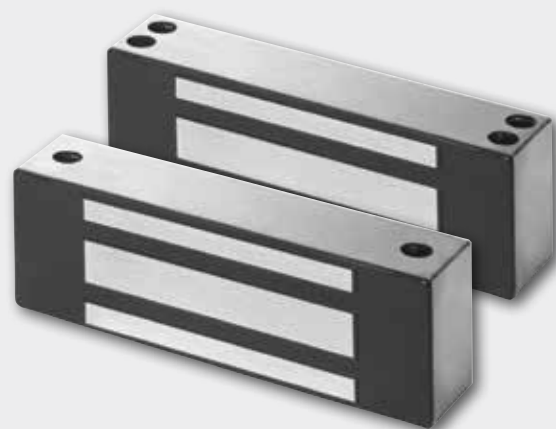




## 40/70 Series

### Electromagnetic locks



### Overview

Schlage's 40/70 Series electromagnetic locks come in five models and are ideal for virtually any retrofit application. These magnetic door locks feature a brick magnet design, providing an all-in-one solution that enables quick and easy installation. Common templating and standardized features such as automatic voltage selection, magnetic bond sensor, door status monitor and stainless steel housing make these magnetic locks easy to stock, easy to select and easy to install.

### Features and benefits

- Ideal for retrofit applications
- Single and top jamb (TJ) models available
- Double magnet model available (70 Series only)
- Low amp draw:
  - 40 Series: .15A @24 VDC, .32A @12 VDC
  - 70 Series - .12A @24 VDC, .25A @12 VDC
- Hold force options right for your application:
  - 40 Series - 500 lb. rated for traffic control applications
  - 70 Series - 1000 lb. rated for high security applications
- Standard features include automatic voltage selector (AVS), magnetic bond sensor (MBS) and door position switch (DPS)
- Simplified 2-piece lock and armature installation
- Stainless steel housing in satin finish – standard with options for single lock dress covers in 3 finishes
- Single lock accessories include: Herculite door kit, universal header bracket, header extension bracket, concrete/wood brackets and aluminum spacer brackets
- UL 10C listed for positive pressure fire tests of door assemblies
- ANSI/BHMA A156.23 Grade 1, cUL and CSFM certifications
- Limited lifetime warranty on magnetic coil assembly

## Specifications

	40	40TJ*	70	70TJ*	72
Holding force	500 lbs	500 lbs	1000 lbs	1000 lbs	1000 lbs / door leaf
Lock Type	Single	Single top jamb	Single	Single top jamb	Double <sup>1</sup>
Input voltage (auto selected)	12/24 VDC	12/24 VDC	12/24 VDC	12/24 VDC	12/24 VDC
Current draw @ 12 VDC	.32A	.32A	.25A	.25A	.50A
@ 24 VDC	.15A	.15A	.12A	.12A	.25A
Lock dimensions (H x L x D)	1 7/8" x 8" x 1 5/8"	1 7/8" x 8" x 1 5/8"	3" x 8" x 1 7/8"	3" x 8" x 1 7/8"	3" x 22" x 1 7/8"
Weight (approximate)	4 lbs	4 lbs	8 lbs	12 lbs	15 lbs
Certifications	UL 10C, cUL, CSFM, ANSI/BHMA 156.23	UL 10C, cUL, CSFM, ANSI/BHMA 156.23	UL 10C, cUL, CSFM, ANSI/BHMA 156.23	UL 10C, cUL, CSFM, ANSI/BHMA 156.23	UL 10C, cUL, CSFM, ANSI/BHMA 156.23
Temperature	0° to 49°C (32° to 120° F)	0° to 49°C (32° to 120° F)	0° to 49°C (32° to 120° F)	0° to 49°C (32° to 120° F)	0° to 49°C (32° to 120° F)

\* 40TJ/70TJ - Top jamb unit (inswinging doors). Magnetic mounts on inside top jamb. Adjustable from top edge of armature.

<sup>1</sup> Separate housings

## Filler plates

Filler plates available in 628 satin aluminum or 335 satin black finishes

1 1/4" x 1/8"

1 1/4" x 1/4"

1 1/4" x 3/8"

1 1/4" x 1/2"

1 1/4" x 5/8"

## Ordering information

- **40 and 70** - Single locks
- **40TJ and 70TJ** - Top jamb single locks for inswinging doors
- **72** - Double lock

Accessories (Available in 628 satin aluminum or 335 satin black.

Dress covers also available in 605 bright brass)

- **HDB-40 and HDB-70** - Herculite door brackets
- **UHB** - Universal header bracket
- **HEB** - Header extension bracket
- **CWB-40 and CWB-70** - Concrete/wood brackets
- **ASB-40 and ASB-70** - Aluminum spacer brackets
- **DC40** - (specify finish #)
- **DC70** - (specify finish #)
- **OSA** - (70 model only) - 1/4" offset armature option

Finishes (accessories only)

- **628** US28 Satin aluminum, anodized (standard)
- **605** US3 Bright brass (dress cover only)
- **335** US19 Satin black, anodized

Allegion, the Allegion logo, Schlage, and the Schlage logo are trademarks of Allegion plc, its subsidiaries and/or affiliates in the United States and other countries. All other trademarks are the property of their respective owners.

## About Allegion

Allegion (NYSE: ALLE) is a global pioneer in safety and security, with leading brands like CISA®, Interflex®, LCN®, Schlage® and Von Duprin®. Focusing on security around the door and adjacent areas, Allegion produces a range of solutions for homes, businesses, schools and other institutions. Allegion is a \$2 billion company, with products sold in almost 130 countries. For more, visit [www.allegion.com](http://www.allegion.com).

aptiQ ■ LCN ■  ■ STEELCRAFT ■ VON DUPRIN



© 2015 Allegion  
004156 Rev. 08/15  
[www.allegion.com/us](http://www.allegion.com/us)