

### Frame Preparation (LHRB Application Shown)

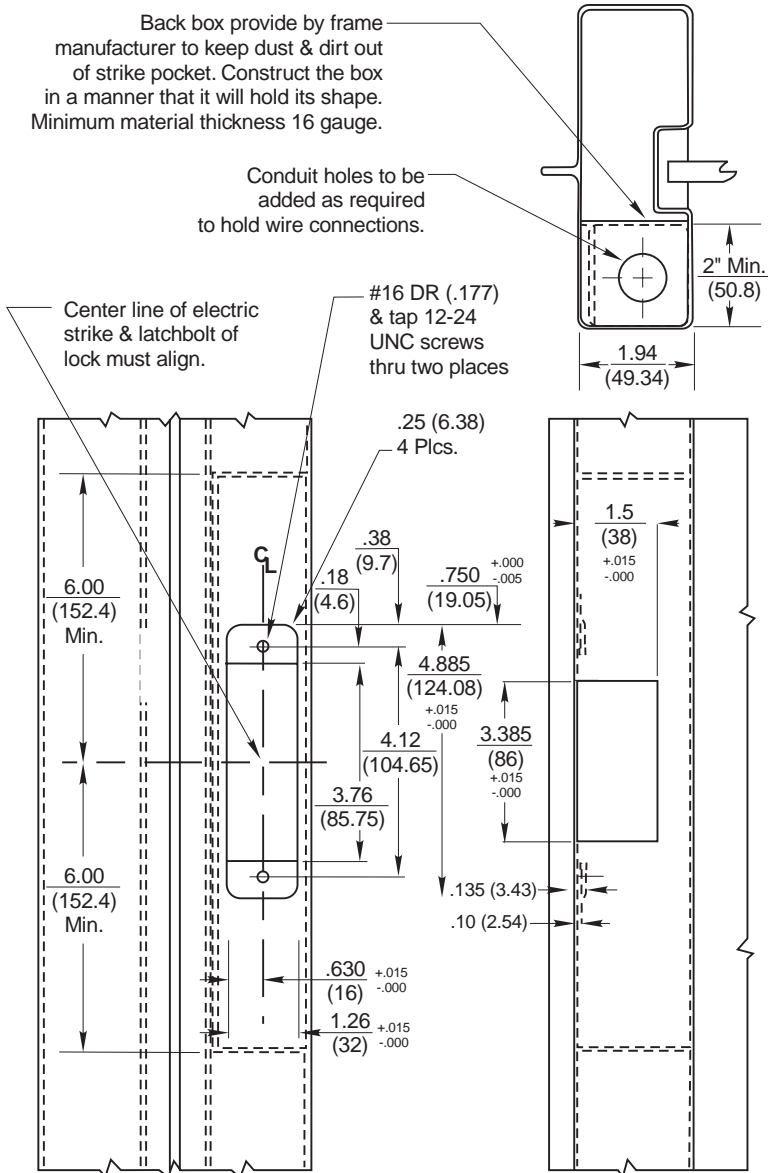
Drawing shows only one method of installation. Method of installation may vary per door & frame manufacturer.

Back box provide by frame manufacturer to keep dust & dirt out of strike pocket. Construct the box in a manner that it will hold its shape. Minimum material thickness 16 gauge.

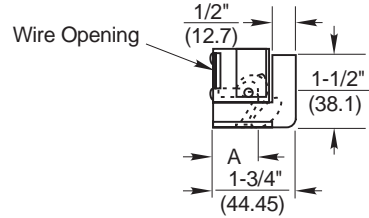
Conduit holes to be added as required to hold wire connections.

Center line of electric strike & latchbolt of lock must align.

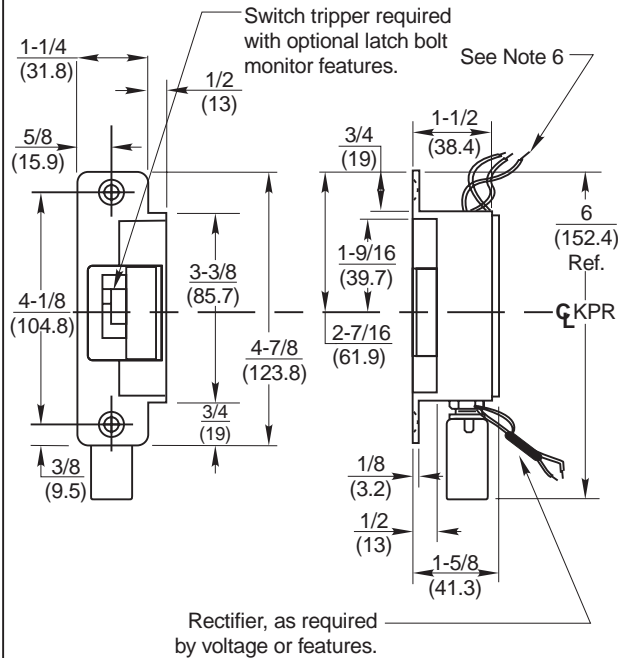
#16 DR (.177) & tap 12-24 UNC screws thru two places



### Model 722 Electric Strike



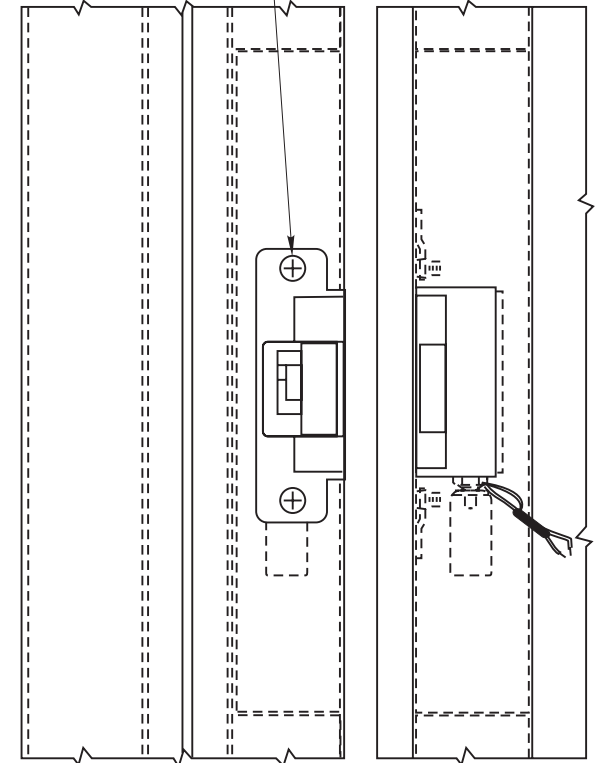
Dimension "A" (Keeper Position) is adjustable from .80 to 1.00. To adjust, loosen the two 8-32 RHMS which are used to mount strike, reposition strike, and retighten screws.



### NOTES:

1. DO NOT SCALE - All dimensions in inches (mm).
2. Dimensions subject to change without notice.
3. Number of wires will vary per features of strike.
4. Cut off all excess wire not req'd for installation.
5. Wires to be run from side & rear of strike to conduit connection.
6. All wiring connections to be made opposite the solenoid end of strike. If a rectifier (optional) is used, it may be installed at either end of strike.
7. Refer to catalog for standard & optional features.
8. Door & frame manufacturers are responsible for providing adequate construction or reinforcements for proper installation of hardware.
9. Tolerances shown are for cutouts.

12-24 x 1/2" Phil.  
Hd. Mach. Scr.  
2 Included



## 722 Electric Strike



REF. REPAIR PART DWG.

2500700

P.O. BOX 25288, CHARLOTTE, NC 28229-8010

TEMPLATE NUMBER

092-0250-005

DATE

9-98

**Frame Preparation (LHRB Application Shown)**

Drawing shows only one method of installation. Method of installation may vary per door & frame manufacturer.

Junction box provided by Folger Adam Co. with 48 & 120 volt strikes to meet UL requirements.

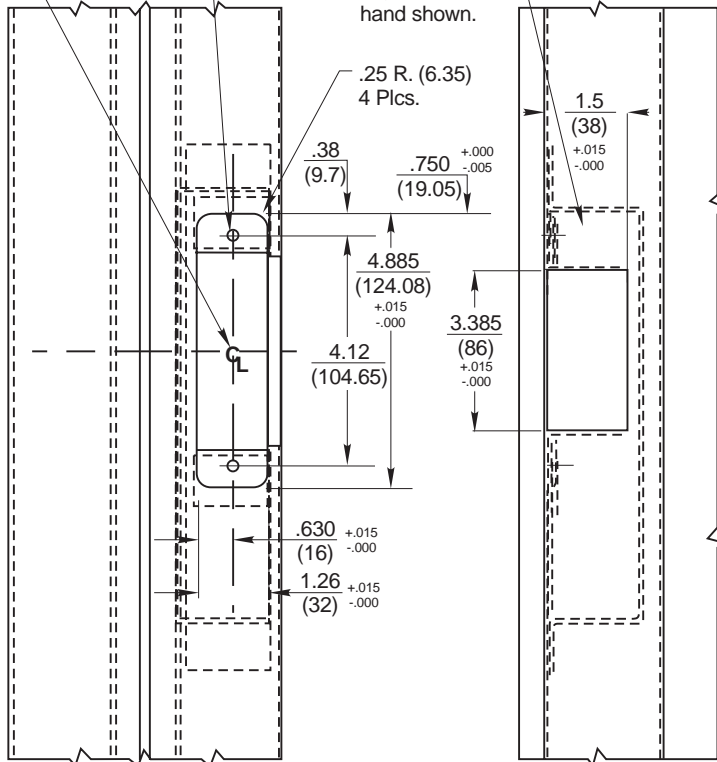
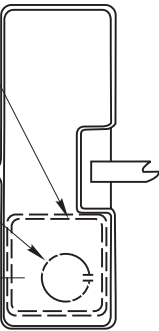
.875 (22.35) Dia conduit knockouts punched out as required. (One in each end)

Center line of electric strike & latch bolt of lock must align.

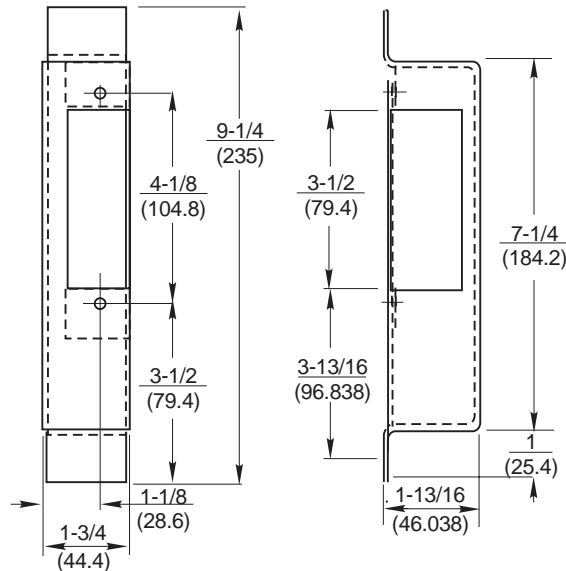
Tapped for 12-24 UNC screws thru two places.

Rectifier if req'd installed at this end, for frame hand shown.

.25 R. (6.35) 4 Plcs.

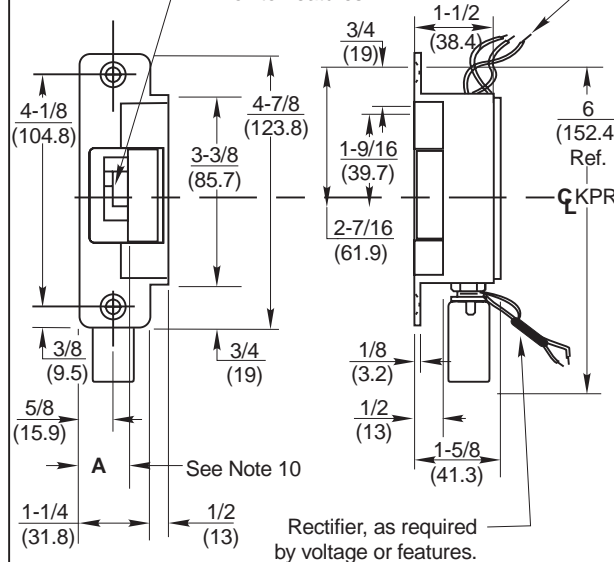


**Model 700 Series Junction Box For Model 722**



Switch tripper required with optional latch bolt monitor features.

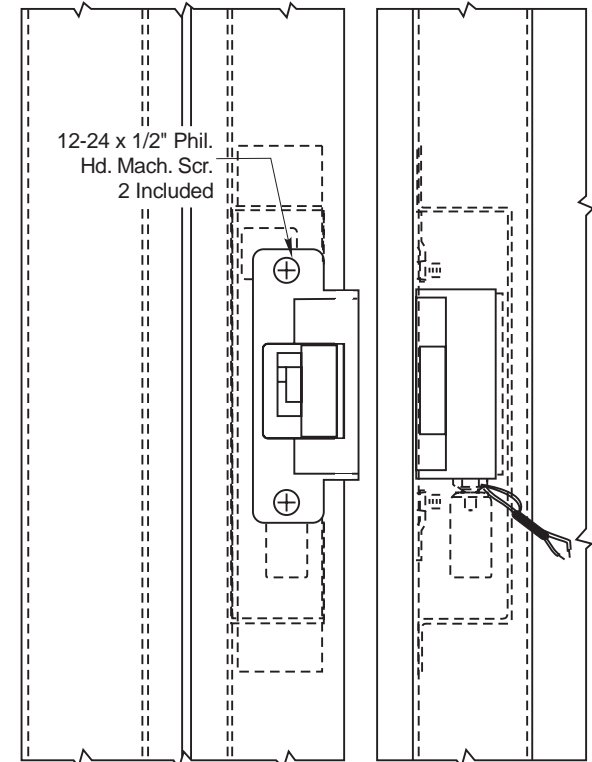
See Note 6



**Model 722 Electric Strike**

**NOTES:**

1. DO NOT SCALE - All dimensions in inches (mm).
2. Dimensions subject to change without notice.
3. Number of wires will vary per features of strike.
4. Cut off all excess wire not req'd for installation.
5. Wires to be run from side & rear of strike to conduit connection.
6. All wiring connections to be made opposite the solenoid end of strike. If a rectifier (optional) is used, it must be installed opposite the solenoid end of strike.
7. Refer to catalog for standard & optional features.
8. Door & frame manufacturers are responsible for providing adequate construction or reinforcements for proper installation of hardware.
9. Tolerances shown are for cutouts.
10. Dimension "A" (Keeper Position) is adjustable from .80 to 1.00. To adjust, loosen the two 8-32 RHMS which are used to mount strike, reposition strike, and retighten screws.



**722 Electric Strike**  
With Junction Box RH or LHRB Application



REF. REPAIR PART DWG.

**2500700**

P.O. BOX 25288, CHARLOTTE, NC 28229-8010

TEMPLATE NUMBER

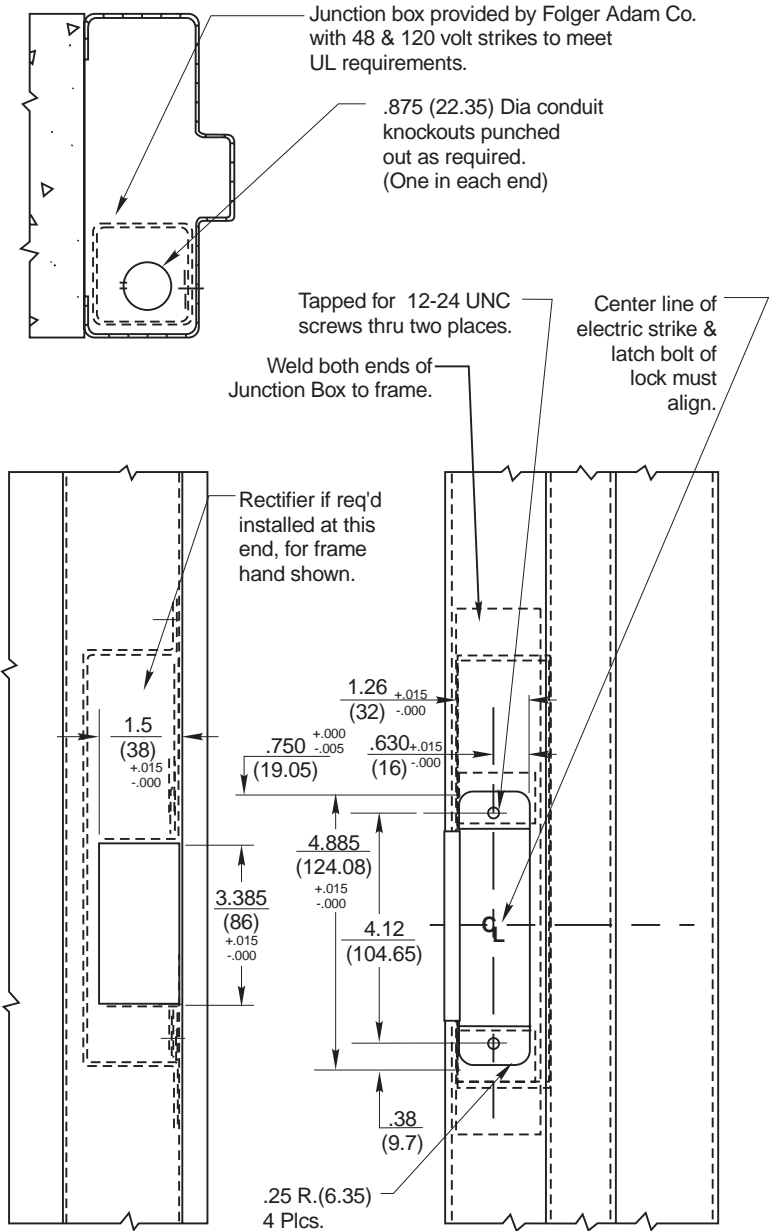
**092-0250-006**

DATE

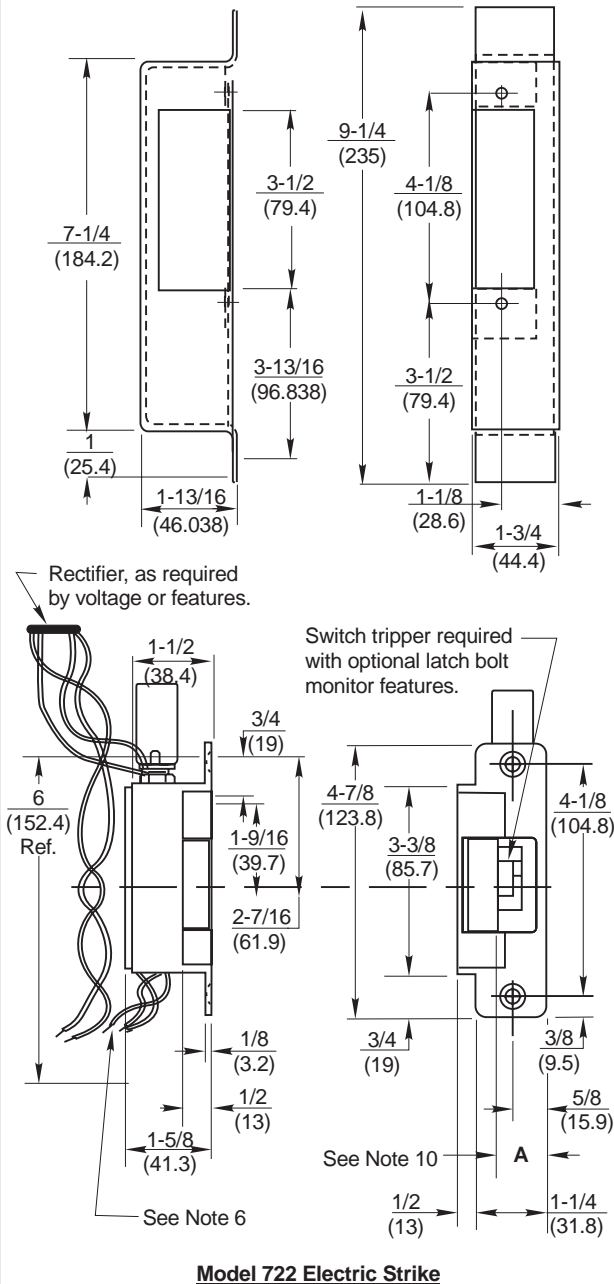
**9-98**

**Frame Preparation (RHRB Application Shown)**

Drawing shows only one method of installation. Method of installation may vary per door & frame manufacturer.

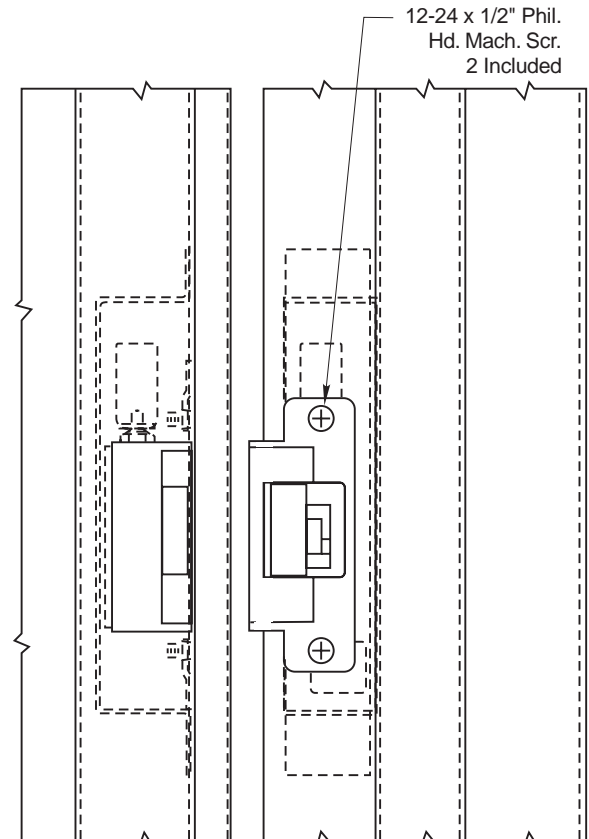


**Model 700 Junction Box For Model 722**



**NOTES:**

1. DO NOT SCALE - All dimensions in inches (mm).
2. Dimensions subject to change without notice.
3. Number of wires will vary per features of strike.
4. Cut off all excess wire not req'd for installation.
5. Wires to be run from side & rear of strike to conduit connection.
6. All wiring connections to be made opposite the solenoid end of strike. If a rectifier (optional) is used, it must be installed opposite the solenoid end of strike.
7. Refer to catalog for standard & optional features.
8. Door & frame manufacturers are responsible for providing adequate construction or reinforcements for proper installation of hardware.
9. Tolerances shown are for cutouts.
10. Dimension "A" (Keeper Position) is adjustable from .80 to 1.00. To adjust, loosen the two 8-32 RHMS which are used to mount strike, reposition strike, and retighten screws.



**722 Electric Strike**  
With Junction Box LH or RHRB Application



REF. REPAIR PART DWG.

**2500700**

P.O. BOX 25288, CHARLOTTE, NC 28229-8010

TEMPLATE NUMBER

**092-0250-007**

DATE

**9-98**