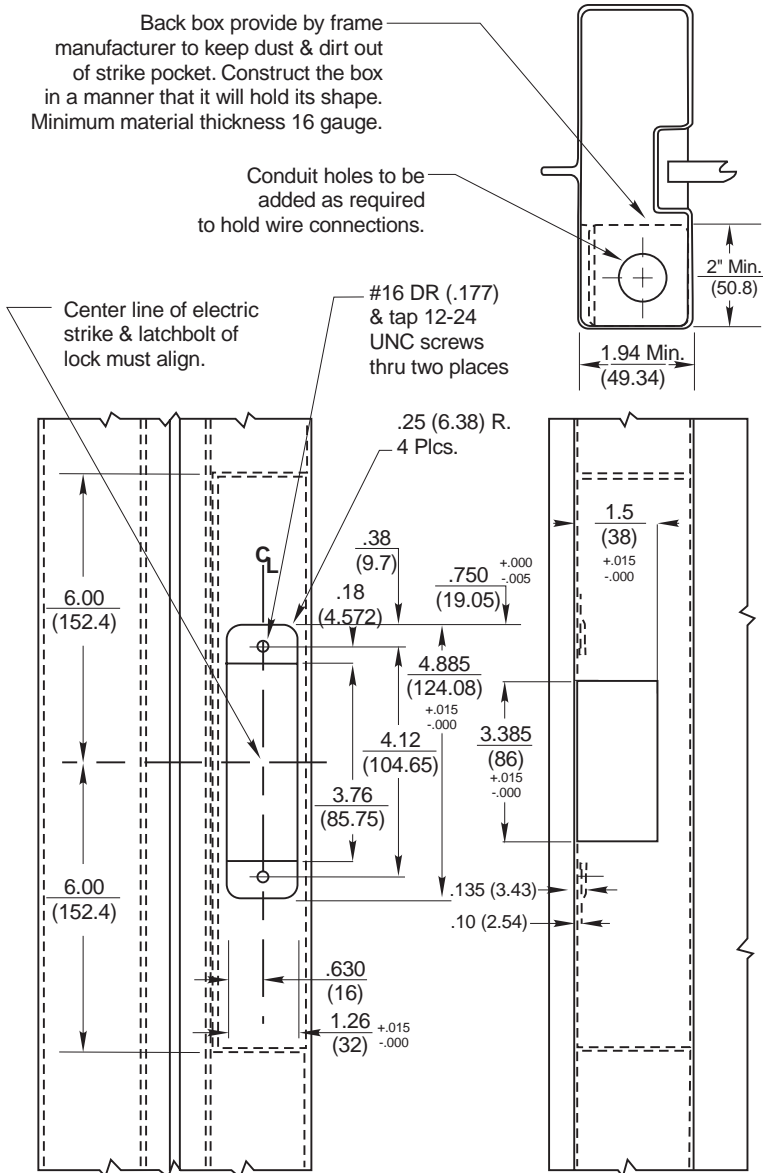


Frame Preparation (LHRB Application Shown)

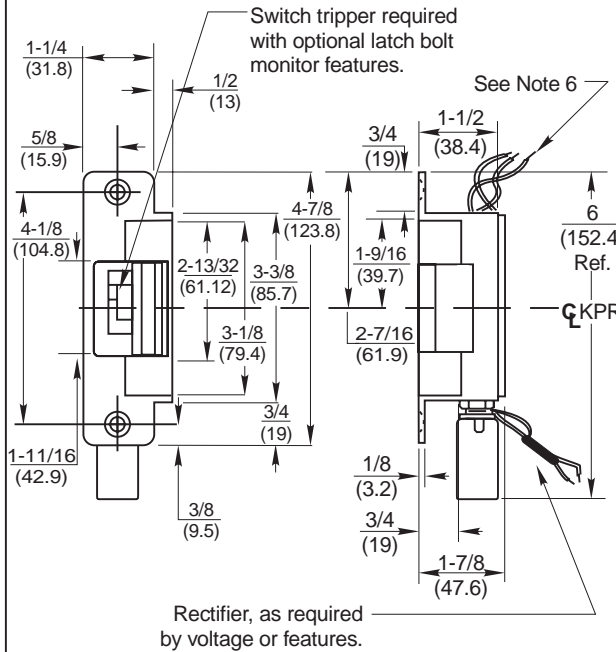
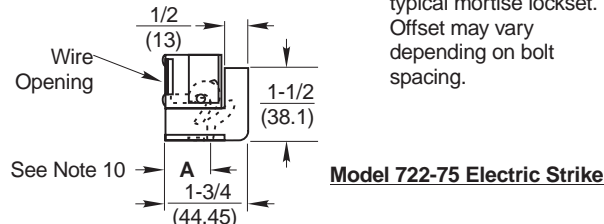
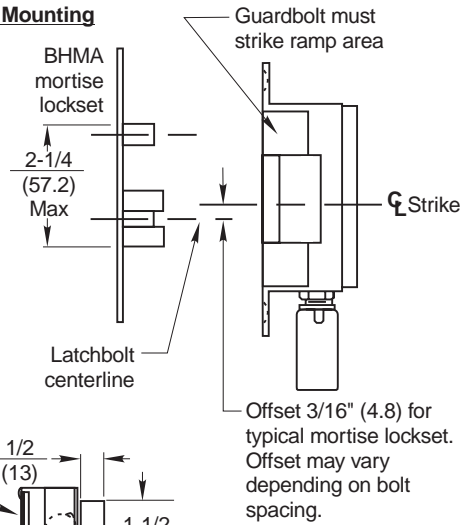
Drawing shows only one method of installation. Method of installation may vary per door & frame manufacturer.

Back box provide by frame manufacturer to keep dust & dirt out of strike pocket. Construct the box in a manner that it will hold its shape. Minimum material thickness 16 gauge.

Conduit holes to be added as required to hold wire connections.



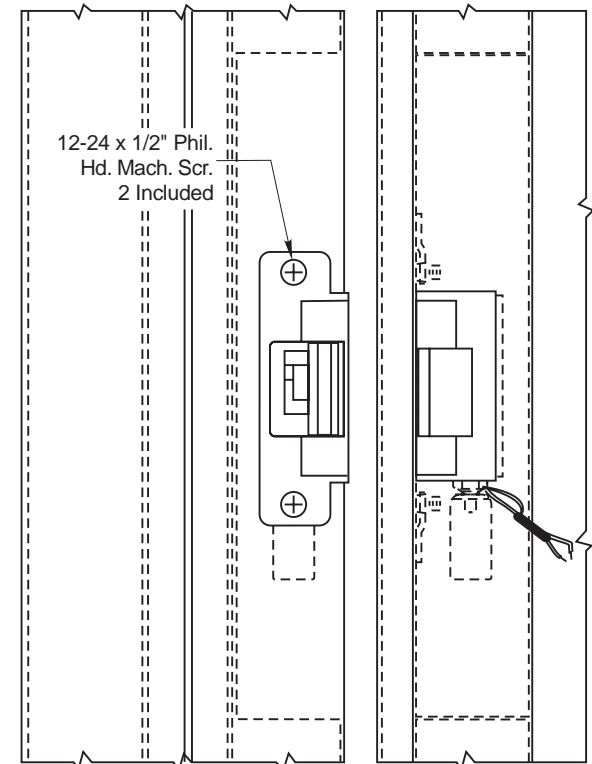
Lock/Strike Mounting



Rectifier, as required by voltage or features.

NOTES:

1. DO NOT SCALE - All dimensions in inches (mm).
2. Dimensions subject to change without notice.
3. Number of wires will vary per features of strike.
4. Cut off all excess wire not req'd for installation.
5. Wires to be run from side & rear of strike to conduit connection.
6. All wiring connections to be made opposite the solenoid end of strike. If a rectifier (optional) is used, it may be installed at either end of strike.
7. Refer to catalog for standard & optional features.
8. Door & frame manufacturers are responsible for providing adequate construction or reinforcements for proper installation of hardware.
9. Tolerances shown are for cutouts.
10. Dimension "A" (Keeper Position) is adjustable from .80 to 1.00. To adjust, loosen the two 8-32 RHMS which are used to mount strike, reposition strike, and retighten screws.



722-75 Electric Strike



REF. REPAIR PART DWG.

2500700

P.O. BOX 25288, CHARLOTTE, NC 28229-8010

TEMPLATE NUMBER

092-0250-013

DATE

9-98