

FRAME PREPARATION (LHRB APPLICATION SHOWN)

Drawing shows only one method of installation. Method of installation may vary per door and frame manufacturer.

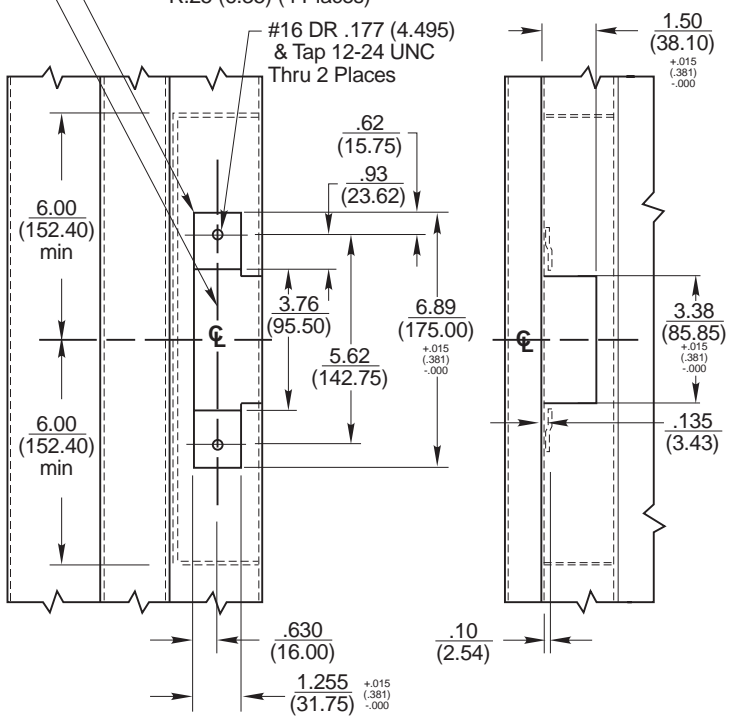
Back box provided by hollow metal manufacturer to keep dust and dirt out of strike pocket. Construct the box in a manner that will hold it's shape. Minimum material thickness 16 gauge.

Conduit holes to be added as required to hold wire connections

Centerline of electric strike and latchbolt of lock must align

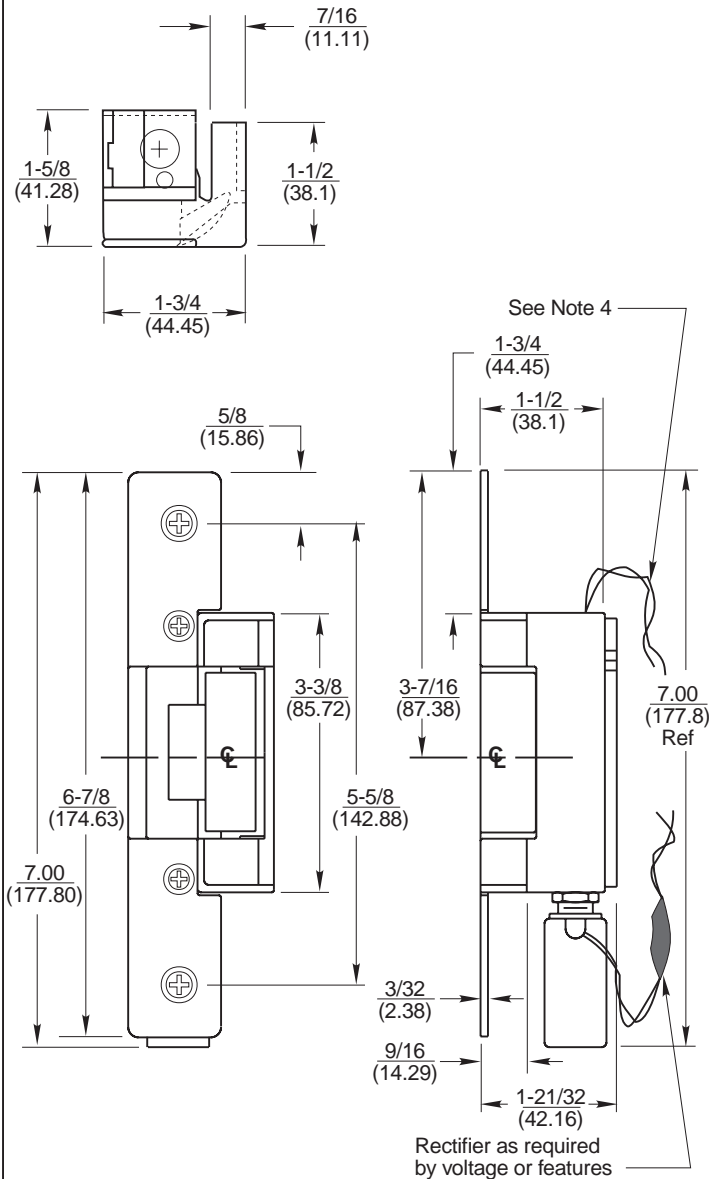
NOTE: 503 - Square corners
505 - Radius corners R.25 (6.35) (4 Places)

#16 DR .177 (4.495) & Tap 12-24 UNC Thru 2 Places



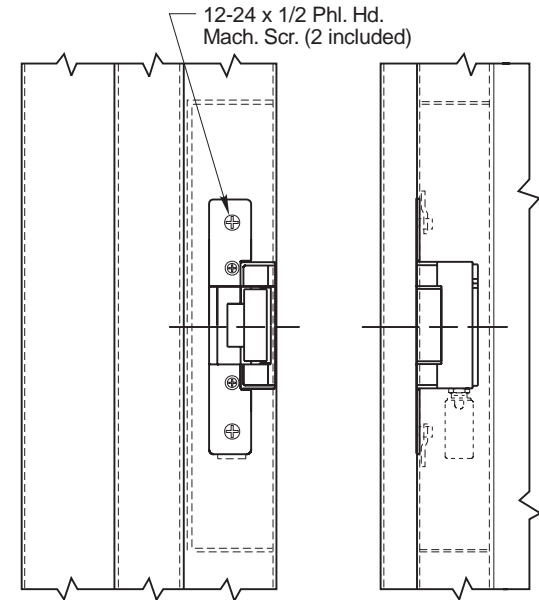
MODEL 503 & 505 ELECTRIC STRIKE

(Template)



NOTES:

1. DO NOT SCALE - All dimensions in inches (mm).
2. Dimensions subject to change without notice.
3. Number of wires will vary per features of strike.
4. All wiring connections to be made opposite the solenoid end of strike. If a rectifier (optional) is used, it may be installed at either end of strike.
5. Wires to be run from side and rear of strike to conduit connection.
6. Cut off all excess wire not required for installation.
7. Refer to catalog for available finishes, voltages, and optional features.
8. Door & frame manufacturers are responsible for providing adequate construction or reinforcements for proper installation of hardware.
9. Tolerances shown are for cutouts.
10. Remove all burrs and break sharp edges.



**503 Electric Strike For Hollow Metal
and
505 Electric Strike For Aluminum**



REF. REPAIR PART DWG.

P.O. BOX 25288, CHARLOTTE, NC 28229-8010

TEMPLATE NUMBER

092-0251-002

DATE

9-98