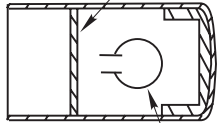


Frame Preparation (RHRB Application Shown)

Drawing shows only one method of installation. Method of installation may vary per door & frame manufacturer.

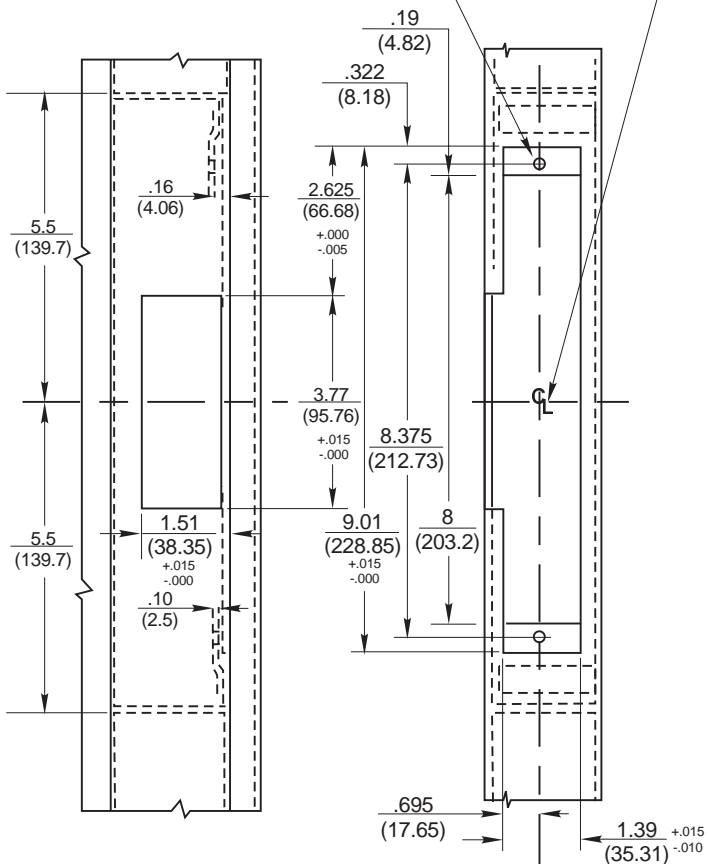
Back box provided by hollow metal manufacturer to keep dust & dirt out of strike pocket. Construct the box in a manner that it will hold its shape. Min. Mat'l. THK. 16 ga., Min. DP. 1-3/4", Min. Width 1-3/4" (44.45 x 44.45)



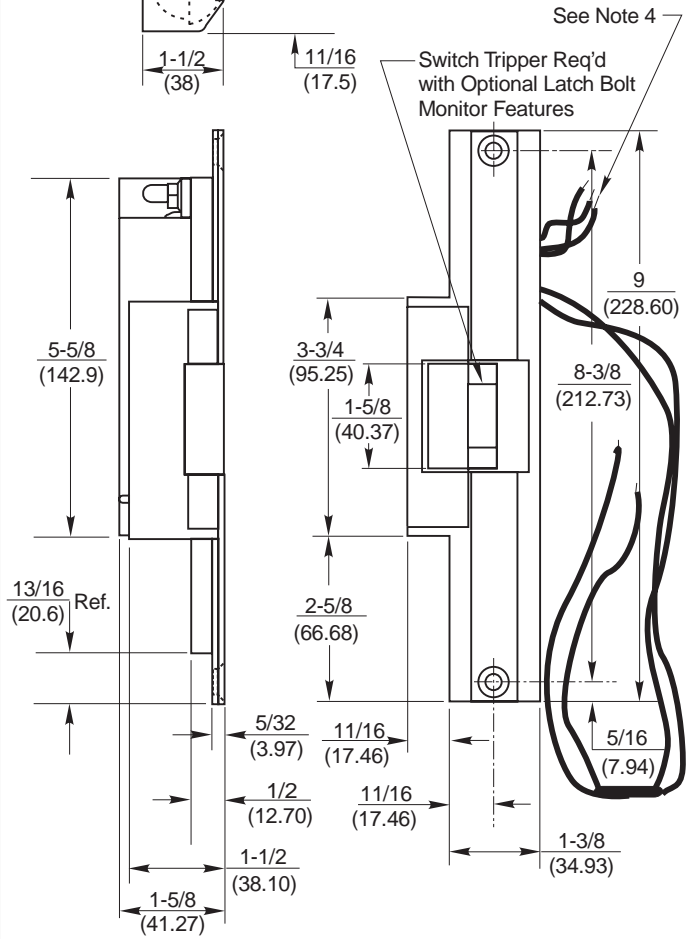
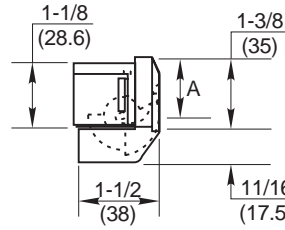
Conduit holes to be added as required.

#16 Drill (.177) tap 12-24 UNC thru 2 places

Center line of electric strike & latchbolt of lock must align.

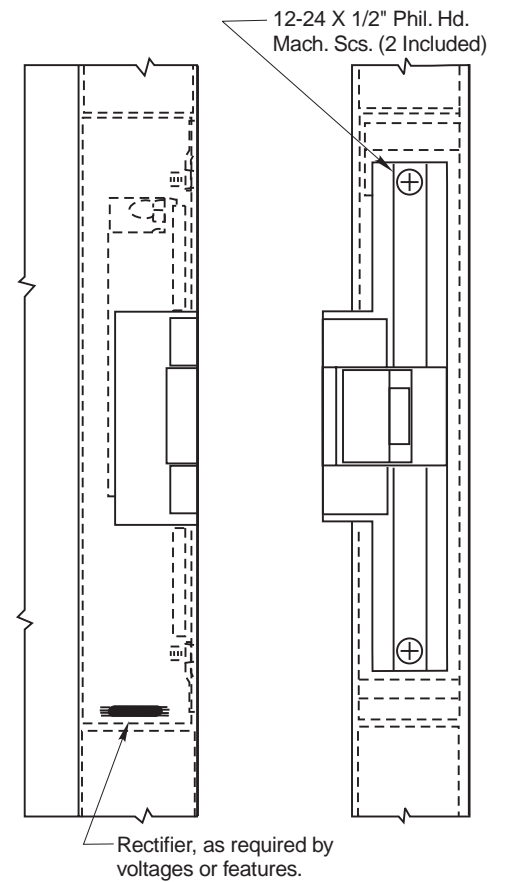


Dimension "A" (Keeper Position) is adjustable from .875 to 1.062. To adjust, loosen the two 12-24 Hex HD strike mounting bolts, reposition strike, and retighten bolts.



NOTES:

1. DO NOT SCALE - All dimensions in inches (mm).
2. Dimensions subject to change without notice.
3. Number of wires will vary per features of strike.
4. All wiring connections to be made at this end of strike. If a rectifier (optional) is used, it may be installed at either end of strike.
5. Cut off all excess wire not req'd for installation.
6. Wires to be run from side & rear of strike to conduit connection.
7. Refer to catalog for standard & optional features.
8. Door & frame manufacturers are responsible for providing adequate construction or reinforcements for proper installation of hardware.
9. Tolerances shown are for cutouts.



310-2 RF Electric Strike



REF. REPAIR PART DWG. 245-1000-001
093-0245-002

P.O. BOX 25288, CHARLOTTE, NC 28229-8010

TEMPLATE NUMBER

092-0245-016

DATE

9-98