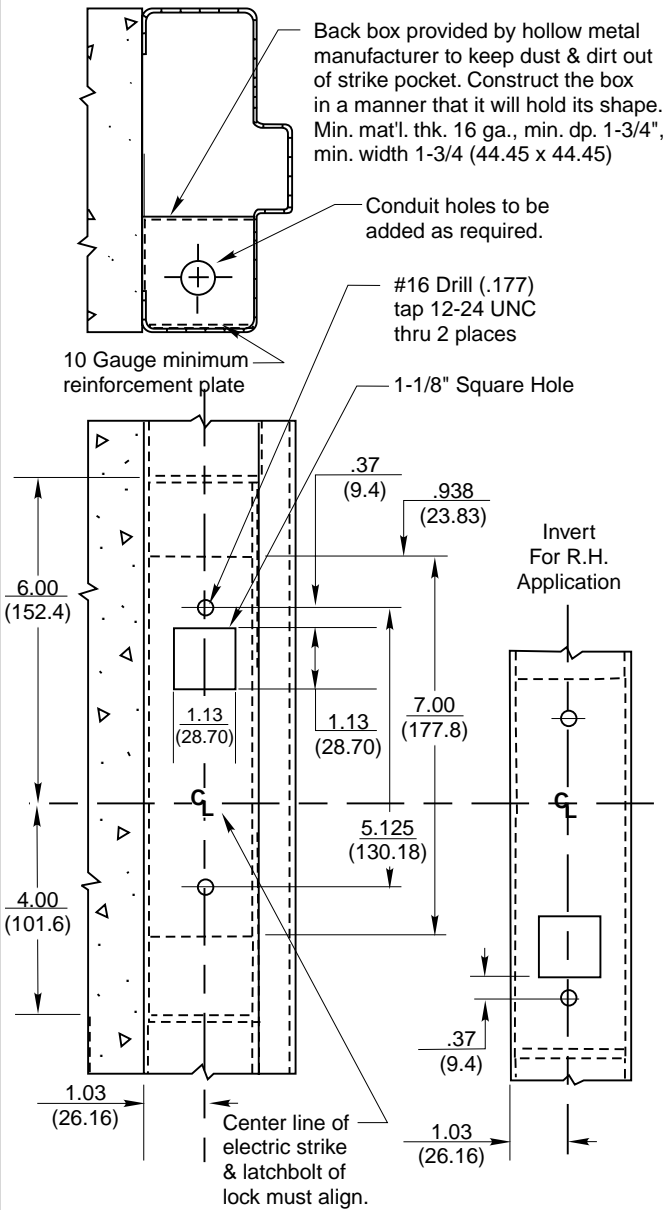


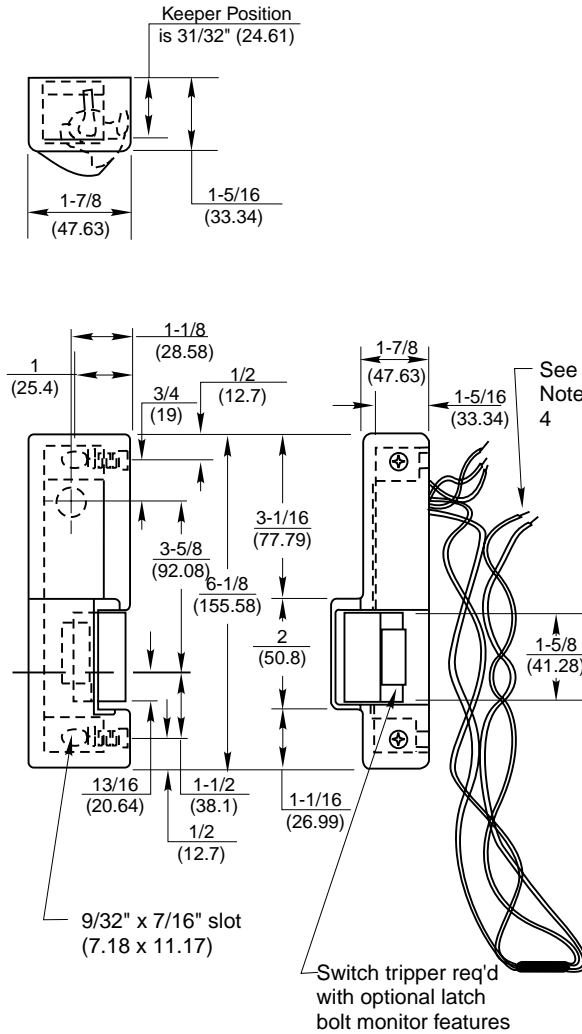
Frame Preparation (L.H. Application Shown)

Drawing shows only one method of installation. Method of installation may vary per door & frame manufacturer.



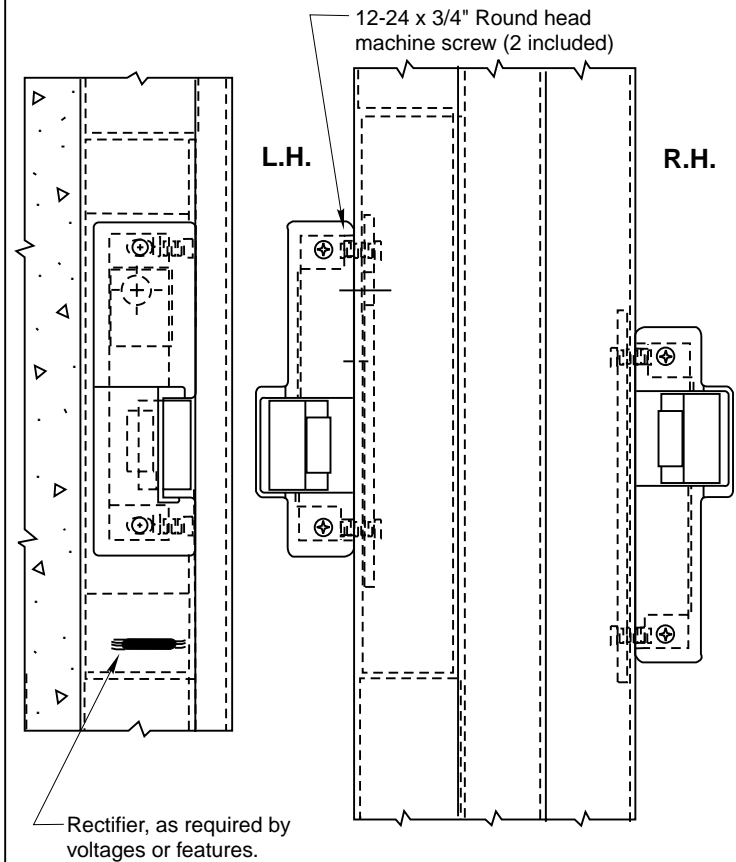
Model 310-5 Electric Strike

L.h. Application Shown
Strike Is Inverted For
R.h. Application



NOTES:

1. DO NOT SCALE - All dimensions in inches (mm).
2. Dimensions subject to change without notice.
3. Number of wires will vary per features of strike.
4. All wiring connections to be made at this end of strike. If a rectifier (optional) is used, it may be installed at either end of strike.
5. Cut off all excess wire not req'd for installation.
6. Wires to be run from side & rear of strike to conduit connection.
7. Refer to catalog for available finishes, voltages, and optional features.
8. Door & frame manufacturers are responsible for providing adequate construction or reinforcements for proper installation of hardware.
9. Tolerances shown are for cutouts.



310-5 Electric Strike