

ARROW ARCHITECTURAL HARDWARE

Cylinders

Mortise Cylinders



MC61

General Specifications

- Body—Brass, 1-5/32" diameter. Six pin tumbler cylinder.
- Furnished—Standard with cylinder collar.
- Length—1-1/8", 1-1/4", 1-1/2", 2".
- Scalp—Brass, Bronze
- Keyway—"A" keyway standard. Arrow sectional keyways available. Consult Mayflower for competitive keyway availability.
- See page 94 for cam availability
- See page 95 for keyways.

Finishes

US3, US4, **US10**, US10B, US26, **US26D**

Cylindrical Lock Cylinders



100C
H100C
K100C

General Specifications

- Body—Solid brass pin tumbler 6 chambers. Pinned 5 for Grade 2 Locksets. Pinned 6 for Grade 1 locksets and all hotel locksets.
- Keyway—"A" keyway standard. Arrow sectional keyways available. Competitive keyways available.
- Tailpieces will vary as required, see page 95 for descriptions.
- See page 95 for keyways.
- Specify K100C for competitive keyway cylinder and specify keyway required.
- See page 92 for cylinder applications.

Finishes

US4, **US26D**

Rim Cylinders



RC62
RC63

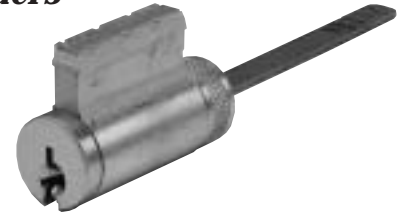
General Specifications

- Body—Brass, 1-5/32" diameter. Six pin cylinder.
- Furnished—With back plate, 2 Screws (2" door max.), tailpiece and cylinder collar.
- RC63 has a lazy tailpiece for use with the K Series.
- Scalp—Brass, Bronze.
- Keyway—"A" keyway standard. Arrow sectional keyways available. Consult Mayflower for competitive keyway availability.
- See page 95 for keyways.

Finishes

US3, US4, **US10**, US10B, US26, **US26D**

Deadlock Cylinders



61C
62C

General Specifications

- Body—Solid brass pin tumbler, 6 chambers for D & E Series deadlocks. E Series pinned 5. D Series pinned 6.
- Keyway—"A" keyway standard. Competitive keyways available.
- 61C is used for single cylinder deadlocks. 62C is used for double cylinder deadlocks.
- See page 95 for keyways.

Finishes

US4, **US26D**

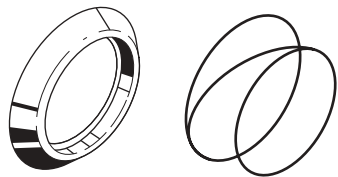
ARROW ARCHITECTURAL HARDWARE

Cylinder Applications for Arrow Locks

	LOCK	A/B	C	D	E	H	J	K	L	M	N	Q	S	Alarms	Exit Devices	
		Series	Series	Series	Series	Series	Series	Series	Series	Series	Series	Series	Series			
CYLINDER																
CYLINDER MODELS	MC61 XCAM	■									■			■ I/S	■	
	61C (SINGLE CYLINDER)			■	■		■									
	62C (DOUBLE CYLINDER)			■	■		■									
	10C		■													
	K100C					■	■	■	■	■		■	■			
	H100C (HOTEL FUNCTION)					■	■	■		■		■	■			
	100C					■	■	■	■	■		■	■			
	RC62													■ O/S	■	
	RC63							■								
	16CR-16/16CR-27 XCAM														■ I/S	■
	16CRT-16/16CRT-27														■ O/S	■
	16CR-62/16CR-72								■							

Cylinder Collars

I.C. Mortise Cylinder Collar 16-113A
(Standard for 16CR-14, 16CR-26, 16CRH-26)

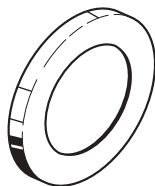


I.C. Rim Cylinder Collar 16RC-113
(Standard for 16RCR-16, 16RCR-27)

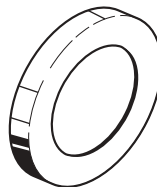


Spacer Rings

16CR-123-1
1/8" Thick



16CR-123-2
1/4" Thick



16CR-123-3
(Standard for 16RCH-26)
3/8" Thick

