

## ADAMS RITE MANUFACTURING COMPANY

### Hardware

#### 4710 Heavy Duty Deadlatch Series

ANSI/BHMA TYPE E8321. Patented.

#### Function

Flexibility of traffic control during and after business hours is offered by Series 4710 deadlatches. A reverse turn of the key (while bolt is held retracted) retains the bolt to allow two-way traffic for hospitals, banks, stores and other buildings which require free entrance at times and exit-only at other times. Interchangeable, without stile modification, with any MS1850A or MS1850S deadlock of same backset and faceplate shape. Note: does not provide maximum security of M.S. Lock. Uses any standard mortise cylinder with M.S. cam.



4711

- Strike—Standard strike furnished is 4502-01 for flat jamb where door closes flush (or nearly flush). Also available: radius strike for opposite stile in paired doors; longer (4501) strike to cover slot strike of MS lock; long lip strikes for centerhung doors.
- Armored Faceplate Finish— 628, 313, and 335. Specify FACE SHAPE by last digit in catalog number: 4710 Flat, 4711 Radius, 4711W Radius with weather-strip, 4712(RH) Right Bevel, and 4712(LH) Left Bevel.

#### How to Order

1. Specify CATALOG NO. and DASH NO. which identifies:

FACE SHAPE	BACKSET	HAND
0 Flat	1 7/8"	5 LH or RHR
1 Radius	2 31/32"	6 RH or LHR
1W Rad. w/W.S.	3 1-1/8"	
2 Bevel	4 1-1/2"	

Example: **4711-36-201-628**

STRIKE SIZE	STRIKE SHAPE/LIP LENGTH	FINISH
1 4.63" 4501	01 Flat/Std. Jamb	628, 313, 335
2 2.63" 4502	02 Radius/Std. Stile	
	17 Flat/Center-Hung 4" Jamb	
	21 Flat/Center-Hung 4.5" Jamb	
	XX Other Lip Lengths	

#### Options

Specify Backset, Face Shape, Finish, Strike and Handing.

#### Specifications

- Turn key or operate handle to retract spring-loaded latch bolt. To hold bolt retracted, push it in and secure by reverse turn of key.
  - Bolt Holdback—A reverse turn of the key, while bolt is held retracted, retains the bolt allowing the door to be free swinging.
  - Latch Bolt—1/2" x 1" x 1/2" throw. All metal with hardened steel internal pins. Handing easily reversible without special tools.
  - Auxiliary Bolt—All metal. Deadlocks latch bolt to prevent "loiding" or case-knife entry.
  - Case—1" x 5-13/16" x depth. Case depth varies with backset.
- | BACKSET | CASE DEPTH |
|---------|------------|
| 7/8"    | 1.51"      |
| 31/32"  | 1.60"      |
| 1-1/8"  | 1.76"      |
| 1-1/2"  | 2.14"      |
- Cylinder Backset—7/8", 31/32", 1-1/8" and 1-1/2" only.

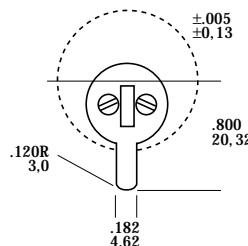
#### Armor Faceplate (Top View)

1" x 6-7/8"

Trim Finish: 628, 313, 335.

24-0017-0220	4710 Flat
24-0017-1220	4711 Radius
24-0017-4220	4711W Radius with Weatherstrip
24-0017-3220	4712 (RH) Right Bevel
24-0017-2220	4712 (LH) Left Bevel

Specify faceshape by fourth digit in catalog number.



#### Cylinder Cam

4710 Series Latches are operable by any standard 1-5/32" diameter mortise cylinder with special M.S. cam dimensioned as shown. Cylinders with cams can be supplied.

### 4510 Cost Effective OEM Replacement Deadlatch

#### Function

Replacement deadlatch for aluminum storefront. A reverse turn of the key (while bolt is held retracted) retains the bolt to allow two-way traffic: free entrance at times and exit-only at other times.

Interchangeable, without stile modification, with any MS1850A or MS1850S deadlock of same backset and faceplate shape. Does not provide maximum security of M.S. Lock. Uses any standard mortise cylinder with M.S. cam.

#### Options

Specify Backset, Face Shape, Finish and Handing.

#### Specifications

- Turn key/operate handle retracts spring-loaded latch bolt. To hold bolt retracted, push in and secure by reverse turn of key.
- Bolt Holdback—A reverse turn of the key, while bolt is held retracted, retains the bolt allowing the door to be free swinging.
- Latch Bolt—1/2" x 1" x 1/2" throw. All metal with anti friction insert. Handing easily reversible without special tools.
- Auxiliary Bolt—All metal. Deadlocks latch bolt to prevent "loiding" or case-knife entry.
- Case—1" x 5-13/16" x depth. Case depth varies with backset.
 

BACKSET	CASE DEPTH
31/32"	1.60"
1-1/8"	1.76"
- Cylinder Backset—31/32" and 1-1/8".
- Armored Faceplate Finish— 628, 313, and 335. Specify FACE SHAPE by last digit in catalog number:

#### How to Order

1. Specify CATALOG NO. and DASH NO. which identifies:

FACE SHAPE	BACKSET	HAND	FINISH
0 Flat	2 31/32"	5 LH or RHR	628, 313, 335
1 Radius	3 1-1/8"	6 RH or LHR	

Example: **4511-36-628**



### MS1850A Cost Effective OEM Replacement Deadlocks

#### Function

Cost effective deadbolt for OEM locks found in aluminum storefront doors.

#### Options

Specify Faceplate shape, finish and Cylinder backset. Operation from inside, with standard thumbturn cylinders.

#### Specifications

- Operation—360° turn of key (or thumbturn) throws or retracts the counterbalanced bolt. Key can be removed only when bolt is in a positively locked or unlocked position. Lock accepts any standard mortise cylinder or thumbturn (with M.S. cam) from either or both sides.
- Cylinder Backset—31/32" and 1-1/8". (Measured from centerline of faceplate to centerline of cylinders.)
- Case—1" x 6" x depth. (Case depth varies with backset)
- Bolt—5/8" x 1-3/8" x 2-7/8" with 1-3/8" throw. Five ply laminated steel.

#### How to Order MS1850A

1. Specify CATALOG NO. and DASH NO. which identifies:

FACEPLATE SHAPE	Backset
MS1850A Flat	2 31/32"
MS1851A Radius	3 1-1/8"

Example: **MS1850A-210-628**

HANDING	FINISH
10 Non-Handed*	628 SATIN ALUM.
*any flat or radius face.	313 "BRONZE" ANOD.
	335 BLACK ANOD.



## ADAMS RITE MANUFACTURING COMPANY

### Hardware

#### 4720ANSI Deadlatch Series

ANSI/BHMA TYPE E8231

##### Function

For hollow metal or wood doors prepared for hardware according to the specifications of the American National Standards Institute, the 4720 ANSI deadlatches provide precise traffic control. A key-controlled bolt hold-back feature allows a door to be freeswinging part of the day and exit only when the bolt is free to latch. This allows a "locked" entrance to be used as an exit by customers or visitors already in the building. Interchangeable, without stile or jamb modification, with any MS1850 ANSI deadlock of same faceplate shape. Replaces 4520ANSI Deadlatch.

##### Options

Specify faceplate shape, handing and finish: 628, 612 or 313.

##### Specifications

- Operation—Turn key or operate handle to retract spring-loaded latch bolt. To hold bolt retracted, push it in and secure by reverse turn of key.
- Latch Bolt—1/2" x 1" x 1/2" throw. All metal with hardened steel pin. Has "anti-pick" step behind mounting face.
- Auxiliary Bolt—All metal with hardened steel pin. Deadlocks latch bolt to prevent "loiding" or case-knife entry.
- Case—1" x 5-13/16" X 2-5/32". Steel plated for corrosion resistance. Anti-twist spacer (for hollow metal) removable for wood installation, reversible for opposite swing of door (flat only).
- Cylinder Backset—1-1/2" only.
- Armored Faceplate—Specify shape of door nose by fourth digit in catalog number:  
Flat 4720 ANSI or Bevel 4722 ANSI
- Strike—Stainless steel US32D finish. Furnished to ANSI preparation specifications for flat jambs. For electric strikes see 7110.
- Bolt Holdback—A reverse turn of the key (while bolt is held fully retracted) retains the bolt, allowing the door to be free swinging.

##### How to Order

1. Specify CATALOG NUMBER with DASH NO. to Specify:

DOOR NOSE SHAPE  
4720AN Flat  
4722AN Bevel

STRIKE  
602 4506  
000 Less Strike

Example:

### 4720AN06-602-313

HAND  
05 LH or RHR  
06 RH or LHR

FINISH  
628, 612, 313



#### 4730 Replacement Latch Series

##### Function

Series 4730 deadlatches are designed to fit, without alteration, the stile cutout for Series MS1850 (not MS1850A) deadlocks of same backset. They do not provide the maximum security level of the M.S. deadlock however, and should not be considered a functional replacement. Also replace, without alteration, older Series 4250 latches.

##### Options

Specify Backset, Face shape, Strike, Finish and Handing.

##### Specifications

- Latch Bolt—1/2" x 1" x 1/2" throw. All metal with hardened steel internal pins. Handing easily reversible without special tools.
- Auxiliary Bolt—All metal with hardened steel pin. Deadlocks latch bolt to prevent "loiding" or case-knife entry.
- Backset—Specify: 7/8", 31/32", 1-1/8". Accepts standard mortise cylinder or thumbturn cylinder (not furnished).
- Operation—Turn key or operate handle to retract spring-loaded latch bolt. To hold bolt retracted, push it in and secure by reverse turn of key.
- Case—1" x 5-13/16" x depth.
- Faceplate—1-1/4" x 7-7/16" (approx.)
- Strike—Standard strike furnished is 4501-01 for flat jamb.
- Armored Faceplate Finish— 628, 313, and 335.  
Specify FACE SHAPE by last digit in catalog number:  
4730 Flat, 4731 Radius, 4732 (RH) Right Bevel, and  
4732 (LH) Left Bevel.



##### How to Order

1. Specify CATALOG NUMBER to Specify:

FACE SHAPE  
0 Flat  
1 Radius  
2 Bevel

BACKSET  
1 7/8"  
2 31/32"  
3 1-1/8"

HAND  
05 LH or RHR  
06 RH or LHR

Example:

### 4731-36-101-628

STRIKE SIZE  
1 4.63" (4501)  
2 2.63" (4502)

STRIKE SHAPE/LIP LENGTH  
01 Flat/Std. Jamb  
02 Radius/Std. Stile  
17 Flat/Center-Hung 4" Jamb  
21 Flat/Center-Hung 4.5" Jamb  
XX Other Lip Lengths

FINISH  
628, 612, 313