

## Electromagnetic Door Holders

### Electromagnetic Door Holders

Rixson electromagnets are designed for virtually any remote door release application. They are primarily used to hold fire and smoke barrier doors open until released by a remote smoke detector or other switching device. The complete assembly consists of an armature contact plate with adjustable pivot mounting for installation on the door, and a heavy-duty electromagnet mounted on the wall or floor behind the door.

#### Features

- 25 to 40 pounds holding power.
- Magnet protected against transients and surges up to 600 volts (AC models).
- Fail-safe operation; power failure releases door to close.
- Positive Release Button initiates closing motion.
- Two-year warranty.

#### Code Listings

- Underwriters' Laboratories, Inc.
- Underwriters' Laboratories of Canada.
- California State Fire Marshal.
- ANSI/BHMA 156.16

#### Finishes

- 689—Sprayed aluminum (SA) (standard)
- 690—Sprayed dark bronze (SB) (optional)
- 691—Sprayed light bronze (SLB) (optional)
- 696—Sprayed gold (SG) (optional)

#### Installation

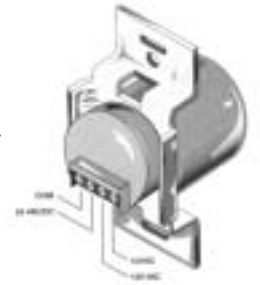
- Install where required by code, where doors may be used to confine smoke or fire, or wherever remote control or automatic closing doors are required.
- Be sure door hardware and trim projections are compatible with total projection of door release.
- Anchor the electromagnet firmly since the wall portion will function as a door stop.
- Locate magnet approximately 6 inches in from lock stile at door. Wall magnets should be mounted approximately 2 to 4 feet above the floor for optimum performance.
- Door-mounted contact plate includes hardware for thru-bolting or concealed mounting.
- Spotting template included with unit assures correct alignment.
- Maximum wire size: 14AWG

#### How To Order

Specify model number, voltage needed, and finish.

#### Triple-Voltage Coil

Triple-voltage coil makes installation and ordering simple. One magnet can receive 12 VDC, 24 VAC/DC or 120 VAC. There are no wires leading from the coil. This coil draws fewer amps than conventional magnets. Tri-voltage coils are available on most models. See the symbol next to the model number.



### Model 980

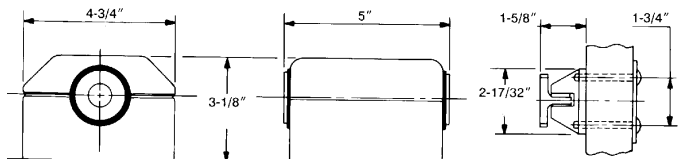
- Floor Mount Single Door.
- Concealed Wiring.
- Total Projection: 6-5/8".
- Mounting Requirements: Conduit connects directly to floor plate.
- UL Listed.



#### Voltage and Current

120 VAC	60 Hz.	.020 amp	}
24 VAC/DC	60 Hz.	.020 amp	
12 VDC		.040 amp	

250 VAC, 50/60 Hz., .009 amp



**Electromagnetic Door Holders**

**Model 981**

- Floor mount,  
2 back-to-back doors.
- Concealed wiring.
- Total Projection: 8-1/4".
- Mounting Requirements: Conduit connects directly to floor plate.
- UL Listed.

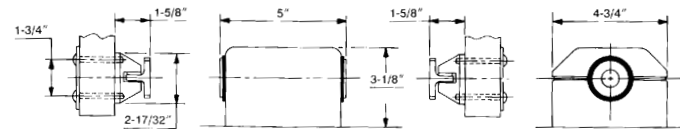


**Voltage and Current**

120 VAC	60 Hz.	.020 amp
24 VAC/DC	60 Hz.	.020 amp
12 VDC		.040 amp



250 VAC, 50/60 Hz., .009 amp



**Model 996**

- Wall mount surface wiring.
- Total Projection: 4-1/8".
- Mounting Requirements:  
1" x 1-1/2" deep adapter housing.
- UL Listed.

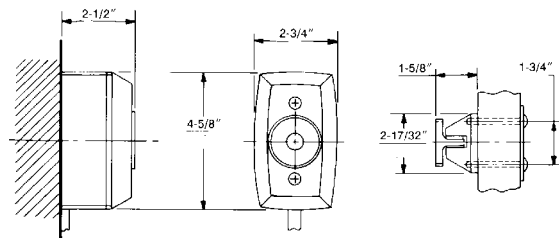


**Voltage and Current**

120 VAC	60 Hz.	.020 amp
24 VAC/DC	60 Hz.	.020 amp
12 VDC		.040 amp



250 VAC, 50/60 Hz., .009 amp



**Model 990**

- Wall mount low profile
- Concealed wiring.
- Total Projection: 1-13/16".
- Mounting Requirements:  
2" x 4" x 2-1/2" outlet box.
- UL Listed.

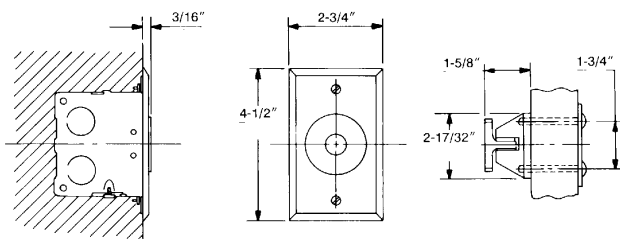


**Voltage and Current**

120 VAC	60 Hz.	.020 amp
24 VAC/DC	60 Hz.	.020 amp
12 VDC		.040 amp



250 VAC, 50/60 Hz., .009 amp



**Model 997**

- Wall mount recessed doors.
- Concealed wiring.
- Total Projection: 2-5/8".
- Mounting Requirements:  
2" x 4" x 1-3/4" outlet box.
- UL Listed.

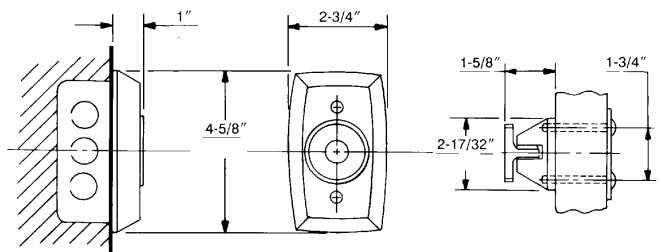


**Voltage and Current**

120 VAC	60 Hz.	.020 amp
24 VAC/DC	60 Hz.	.020 amp
12 VDC		.040 amp



250 VAC, 50/60 Hz., .009 amp



**Electromagnetic Door Holders and Accessories**

**Model 998**

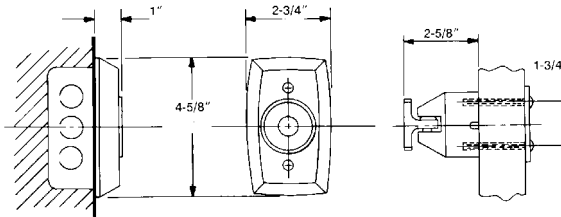
- Wall mount standard doors.
- Concealed wiring.
- Total Projection: 3-5/8".
- Mounting Requirements: 2" x 4" x 1-3/4" outlet box.
- UL Listed.



**Voltage and Current**

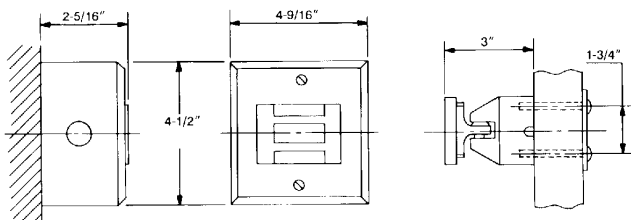
120 VAC	60 Hz.	.020 amp
24 VAC/DC	60 Hz.	.020 amp
12 VDC		.040 amp

250 VAC, 50/60 Hz., .009 amp



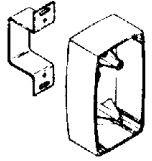
**FM993**

- High hold electromagnetic door release.
- 300 pound holding force.
- Armature plate thru-bolted to maintain consistent contact with magnet.
- Fail-safe operation power failure releases door to close.
- Two-year warranty.
- Adjusting screw on armature allows for alignment of contact plate.
- U.L. listed.
- Typical Usage: Surface wiring.
- Total Projection: 5-1/4".
- Mounting Requirements: Switch box included 4-1/2" x 4-9/16" x 2-5/16" deep.
- Voltage and Current: 24VAC/DC 25 amp.
- Substantial wall reinforcement required.



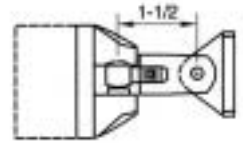
**996XK Extension Kit**

Part# 996631—Specify finish.  
1-1/2" Extension for 997 and 998 only.



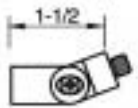
**Part# 900**

Base unit armature extension mounts between armature and contact plate.

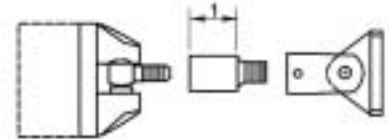


**Part# 900-Z**

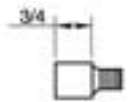
Armature extension 90° bend



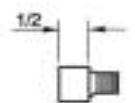
**900-100**



**900-75**



**900-50**



*Note: Extension pieces must be used in conjunction with 900 base unit.*

## Door Release

### Model 972/973

For Rolling doors and other special applications

#### Models

**972H** for Swinging Doors

**972S** for Sliding Doors

**972U** for Overhead Doors

The Rixson 972 Industrial Door Release is listed by Underwriters' Laboratories as a substitute for fusible links in such applications as overhead rolling doors, guillotine doors, fire dampers and self-closing windows. These heavy-duty units provide positive latching and automatic release when triggered by a smoke detector, manual pull station or other electrically operated switch.

The 973 door release is approved for use in Class 1, Division 2 hazardous locations when wired in accordance with NEC Article 500. Product dimensions and templating are identical to the 972 series.

#### Features

- Approximately 75 lb. holding power
- Fail-safe operation - power failure releases door to close
- Two-year warranty

#### Code Listings

- Underwriters' Laboratories, Inc.
- Underwriters' Laboratories of Canada
- State of California (3550-047:13)

#### Voltage and Current

Voltage		Current
120 VAC	60 Hz.	.150 amp
24 VAC	60 Hz.	.150 amp
24 VDC		.08 amp
12 VDC		.08 amp

