

Rixson Smok-Cheks®

Smok-Cheks® are electro-mechanical door closers/holders combining the functions of a single-point door holder with a door closer. Smok-Chek's are designed to hold fire/smoke doors open and release when activated by a fire alarm system.

The SMOK-CHEK® is available as a fully detected "stand alone" unit for buildings not equipped with an alarm system, or as a non-detected unit in buildings with existing alarm systems. All Smok-Cheks® are fail safe. Applications include cross-corridor and double egress doors, horizontal exit and stairway doors.

The modular design of a Smok-Chek® offers ease of replacement for all major components including the magnet, holder, detector module, closer, and arm.

Standard Features

- Mounts on 2" door frame.
- Available in 24VAC/DC or 120VAC. Low current draw compatible with any fire alarm system.
- Closer has adjustable back check cushioning.
- ANSI A156.15—Grade 1.
- 2-year limited warranty.
- Finishes available: 689, 690, 691 and 696.

Caution

Smok-Cheks® are intended to hold the doors open at all times and release/close the doors in case of a fire. Units are not designed to be manually cycled in and out of hold open. Where continuous cycling is required, we suggest electrical breakout by means of an independent switch.

The Smok-Chek® V Series utilizes an independent door mounted closer with the electro-mechanical holder mounted to the frame.

The Smok-Chek® VI Series offers an integrated solution completely enclosed in a metal covered, frame mounted design.

Smok-Chek® V



Features

- Dual equal chamber ionization detector modules.
- Separate surface closer with multi-size spring—sizes 2 through 6.
- Non-handed.
- Mechanical hold-open at 180°.
- Arms available for deep reveal on push side only.
- U.L. Listed.

Model 0600/2600

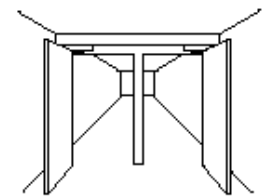
Application

0600 Non-detected

Pull Side Mount

Hold-open range of 85°-145°

Available: 120VAC (17MA)
24VAC/DC (80MA)



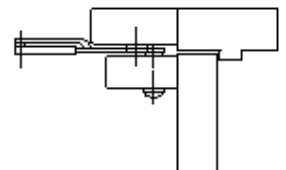
Typical Installation
Cross Corridor—Doors swing in same direction

2600 Detected

Pull Side Mount

Hold-open same as 0600

Available: 120V (33MA)
24AC (47MA)
24VDC 4 wire (30MA)



Technical Information
Door flush with frame to 1/8" reveal maximum on pull side of opening.

Model 0601/2601

Application

0601 Non-detected

Push side mount

Hold-open range 85°-135° (to allow doors to swing 180° specify arm 550789) for reveals 2-3/4" or less. 85°-95° for reveals 2-3/4" to 3-1/2"

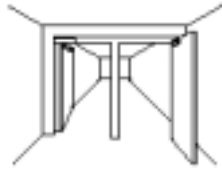
Available: 120VAC (17MA)
24VAC/DC 4 wire (80MA)

2601 Detected

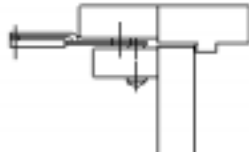
Push side mount

Hold-open same as 0601

Available: 120VAC (33MA)
24AC (47MA)
24VDC 4 wire (30MA)



Typical Installation
Cross Corridor - Double egress doors swing in opposite direction.



Technical Information
For double egress doors and doors set within a reveal. Maximum reveal: 3-1/2". For reveals between 3-1/2" and 5-1/2". Specify 550789 arm.

Smok-Chek® VI

Features

- Ionization smoke detector with dual chambers to reduce false alarms.
- Available in 24VAC/DC or 120VAC. Low current draw compatible with any fire alarm system.
- Spring size 4 only.
- Handed.
- Aluminum alloy shell closer with rack & pinion design.
- Adjustable closing and latch speeds.
- Selective hold open option. Factory hold open at 80° and beyond. Can be adjusted in field.
- Infinite hold open. Door will hold at any degree up to 165°. Maximum swing 180°. Allow 20° beyond handle projection to achieve hold open at 90°.
- Optional free swing arm available. Door will stay at any desired degree (pull side only).
- Adjustable backcheck positioning.
- Narrow projection sprayed aluminum cover conceals the entire unit and projects 2-9/16" from frame face.

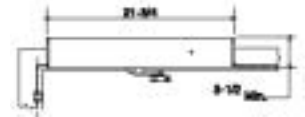
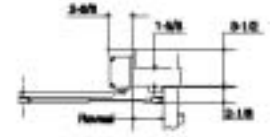


Model 4Push



Product Description and Features

- Non-detected.
- Handed—specify swing of door.
- Push side (stop) mounted.
- Minimum door width 26".
- Maximum door opening 180°.
- Maximum hold open 165°.
- Infinite Hold Open (Option)—door will hold at any degree (0°-175°), suffix I.
- Selective Hold Open (Standard)—Preset at factory (80°-175°), suffix S.
- Available in 120V AC .035amps or 24V AC/DC .070amps.
- Can be used with smoke detectors or as a slave unit to the 6PUSH.
- When used in conjunction with 6PUSH, 120VAC or 24VAC/DC, this unit must be ordered as 24VAC/DC.
- Combination units are best suited for use on corridor or stairwell doors.

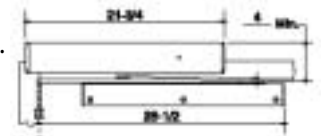
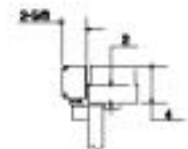


Model 4Pull



Product Description and Features

- Non-detected.
- Handed—specify swing of door.
- Pull side mounted.
- Free swing arm available (prefix "FS").
- Double egress arm available for reveals deeper than 1/8" up to 3" (prefix "DE"). Maximum opening 110°.
- Maximum door opening 180°.
- Maximum hold open 165°.
- 2" clearance required above 2" frame.
- Six bolts included standard.
- When used in conjunction with 6PULL, 120VAC or 24VAC/DC, this unit must be ordered as 24VAC/DC.
- Combination units are best suited for use on corridor or stairwell door or patient room doors with the optional free swing arm.
- Other features and functions identical to 4PUSH.

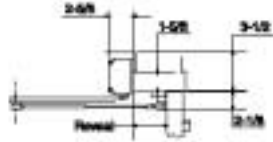


Model 6Push



Product Description and Features

- Detected with dual ionization chambers.
- Handed—specify swing of door.
- Push side (stop) mounted.
- Minimum door width 26".
- Maximum door opening 180°.
- Maximum hold open 165°.
- Infinite Hold Open (option): door will hold at any degree (0°-165°), suffix I.
- Selective Hold Open (standard): preset at factory (80°-165°), suffix S.
- Available in 120V AC .035amps or 24V AC/DC .070 amps.
- Can be used in conjunction with the non-detected unit (4PUSH).



Model 6Pull



Product Description and Features

- Detected with dual ionization chambers.
- Handed—specify swing of door.
- Pull side mounted.
- Free swing arm available (prefix "FS").
- Double egress arm available for reveals deeper than 1/8" up to 3" (prefix "DE") Maximum opening 110°.
- Maximum door opening 180°.
- Maximum hold open 165°.
- 2" clearance required above 2" frame.
- Sex bolts included standard.
- Can be used in conjunction with non-detected unit (4PULL).
- Best suited for use on corridor or stairwell doors or patient room doors with the optional free swing arm.
- Other features and functions identical to 6PUSH.

