



700 Series General Information

Folger Adam 700 Series Electric Strikes are compact in size—smaller than those in the 300 series—but equal in strength and tamper resistance. They are used in commercial and industrial buildings of all kinds. These strikes are ideal for controlling entrances and exits through doors, wherever access control is desired.

These electric strikes are solenoid actuated, to unlock when energized, and to be controlled by remote switches or card-access devices. They are designed to meet BHMA Standard 501, Grade 1 requirements. They are also listed by Underwriters' Laboratories, Inc. as burglary-protection devices. Models 712 and 732, with non-fail-safe operation, are also listed as fire-door accessories with Class A, 3-hour rating. (The fail-safe feature is not permitted in electric strikes which are to be used on UL-labeled fire doors.)

700 Series Standard Features

- Corrosion Resistant Metals—Cast stainless steel case (when applicable) and working parts, stainless steel springs.
- Tamper-Resistant, heavy-duty construction.
- Non-Fail-Safe—Unlocks when energized.
- Solenoid Actuated—May be energized continuously when unlocked.
- Reversible—Non-handed.
- Built-in Strain Relief—Keeps wires from pulling loose.
- Horizontal Adjustment—to compensate for misalignment.
- Listed by Underwriters' Laboratories, Inc.—Burglary-Resistant Electric Door Strike. (UL Standard No. 1034, Burglary-Resistant Electric Locking Mechanisms.)
- BHMA Standard 501, Grade 1 Electric Strike.
- Supplied with Wiring Diagram and installation data.

Finishes Available

Unless otherwise noted the following finishes are available: US4, US10, US10B, US26, US26D, US32D.

Optional Feature Descriptions

Indication Switches

Internal switch(es) to monitor the positions of the latchbolt and/or locking cam. This feature can be used for remote door monitoring, to control alarms, indicating lights and interlocks. One or two switches can be supplied, depending on circuit requirements. Specify switch options by letters:

- LBM—A switch to monitor the latchbolt. It indicates whether or not the latchbolt is extended into the strike.* (An external switch tripper is added into the keeper area for the latchbolt.)
- LCM—A switch to monitor the locking cam. It indicates that the strike is either locked or unlocked.
- LBMLCM—Two switches wired in series, one to monitor the latchbolt and the other to monitor the locking cam. Together, they indicate that the latchbolt is extended into the strike, and that the strike is locked.* (An external switch tripper is added into the keeper area for the latchbolt.)
- LCMA—This is the same as LCM with an additional switch activated by the latchbolt, for auxiliary purposes.* (An external switch tripper is added into the keeper area for the latchbolt.)
- 1/2LBM—A switch to monitor a 1/2" or 5/8"-throw latchbolt. It indicates whether or not the latchbolt is extended into the strike.* (An external switch tripper is added into the keeper area for the latchbolt.)
- 3/4LBM—A switch to monitor a 3/4"-throw latchbolt. It indicates whether or not the latchbolt is extended into the strike.* (An external switch tripper is added into the keeper area for the latchbolt.)
- 1/2LBMLCM—A switch to monitor a 1/2" or 5/8"-throw latchbolt and locking cam. It indicates that the latchbolt is extended into the strike, and that the strike is locked.* (An external switch tripper is added into the keeper area for the latchbolt.)
- 3/4LBMLCM—A switch to monitor a 3/4"-throw latchbolt and locking cam. It indicates that the latchbolt is extended into the strike, and that the strike is locked.* (An external switch tripper is added into the keeper area for the latchbolt.)
- 1/2LCBMA—This is the same as 1/2LBMLCM, with an additional switch activated by the latchbolt, for auxiliary purposes.*
- 3/4LCBMA—This is the same as 3/4LBMLCM, with an additional switch activated by the latchbolt, for auxiliary purposes.*

Solenoid Operating Voltages

- AC Voltages—6, 12, 16, 24, 48 or 120 VAC, which are for silent operation—without the "buzzing" sound. They use a DC solenoid with an externally-attached, full-wave bridge rectifier.
- DC Voltages—6, 12, 16, 24, 48 or 120 VDC.
- Fail-Safe Operation—Locks when energized, unlocks when de-energized for applications requiring automatic unlocking in case of power failure. Specify "FS".

Caution: The fail-safe feature is not permitted on strikes for use with UL-labeled fire-doors. All fail-safe strikes are actuated by a DC solenoid. When primary power source is AC, solenoid is supplied with an externally attached, fullwave bridge rectifier.

**NOTE: When door is open, the latchbolt switch tripper can be manually depressed, thereby giving a false indication that the door is locked. This can be eliminated, if desired, by installing a door-position indication switch and wiring it in series with the indication switch in the strike. Then a "secure" signal can be produced only after three conditions have been met:*

1) latchbolt switch tripper is depressed; 2) strike is locked, and 3) door is closed. Care must be taken to align the latchbolt with the keeper and switch tripper in the electric strike especially when used with locks which have segmented anti-friction bolts.



710 Electric Strike

Locking mechanism only—without faceplate. For use with custom applications or as replacements.

Features

- Corrosion Resistant Metals—Stainless steel case and working parts, stainless steel springs. Tamper-resistant, heavy-duty construction.
- Non-Fail-Safe—Unlocks when energized.
- Solenoid Actuated. May be energized continuously when unlocked.
- Keeper Depth—1/2" standard.
- Reversible—Non-handed.
- Built-in Strain Relief.
- Horizontal Adjustment—to compensate for misalignment.



Options

- LBM—A switch to monitor the latchbolt.
- LCM—A switch to monitor the locking cam. .
- LBMLCM—Two switches wired in series, one to monitor the latchbolt and the other to monitor the locking cam.
- LCMA—This is the same as LCM, with an additional switch activated by the latchbolt, for auxiliary purposes.
- Solenoid Operating Voltages:
AC Voltages-6, 12, 16, 24, 48 or 120 VAC
DC Voltages-6, 12, 16, 24, 48 or 120 VDC.
- Fail-Safe Operation—Specify "FS".
- Accessories Available—Plug Connector, specify "PC".

How to Order: (example)

710 x 24 VDC x LCMA

712 Electric Strike

For use with locks having 1/2" or 5/8" bolt throw (without deadbolts) and with mortise exit devices—hollow-metal frame applications.

Features

- Corrosion Resistant Metals—Brass or cast stainless steel faceplate, stainless steel case and working parts, stainless steel springs. Tamper-resistant, heavy-duty construction.
- Non-Fail-Safe—Unlocks when energized.
- Solenoid Actuated. May be energized continuously when unlocked.
- Keeper Depth—1/2" standard.
- Reversible—Non-handed.
- Built-in Strain Relief.
- Horizontal Adjustment—to compensate for misalignment.
- UL Listed—Electric Strike for Fire Door. (UL Standard No. 10B, Fire Tests of door assemblies- Class A, 3-Hour, single-swing doors.)
- Listed by Underwriters' Laboratories, Inc.—Burglary-Resistant Electric Door Strike. (UL Standard No. 1034, Burglary-Resistant Electric Locking Mechanisms.)
- BHMA Standard 501, Grade 1 Electric Strike.
- Fits Standard ANSI A115.1 Frame cutout—with slight modification to face of frame.
- Finishes Available: US4, US10, US10B, US26, US26D, US32D.



Options

- LBM—A switch to monitor the latchbolt.
- LCM—A switch to monitor the locking cam.
- LBMLCM—Two switches wired in series, one to monitor the latchbolt and the other to monitor the locking cam.
- LCMA—This is the same as LCM, with an additional switch activated by the latchbolt, for auxiliary purposes.
- Solenoid Operating Voltages:
AC Voltages-6, 12, 16, 24, 48 or 120 VAC
DC Voltages-6, 12, 16, 24, 48 or 120 VDC.
- Fail-Safe Operation—Specify "FS".
- Extended Lip on Faceplate—When strike is used in a door frame having a deep rabbet, an extension may be added to the existing lip on the faceplate, forming a path for the latchbolt. An additional 2" long lip is available in increments of 1/4". (Standard strike has a 1/2" long lip on faceplate.) Specify "EL" x length desired.
- Accessories Available—Plug Connector, specify "PC".
Mounting Tabs and Astragal.

How to Order: (example)

710 x 24 VDC x LCMA x US4



722 Electric Strike

For use with locks having 1/2" or 5/8" bolt throw (without deadbolts) and with mortise exit devices—Aluminum frame applications.

Features

- Corrosion Resistant Metals—Cast stainless steel faceplate, case and working parts, stainless steel springs. Tamper-resistant, heavy-duty construction.
- Non-Fail-Safe—Unlocks when energized.
- Solenoid Actuated. May be energized continuously when unlocked.
- Keeper Depth—1/2" standard.
- Reversible—Non-handed.
- Built-in Strain Relief.
- Horizontal Adjustment—to compensate for misalignment.
- Listed by Underwriters' Laboratories, Inc.—Burglary-Resistant Electric Door Strike. (UL Standard No. 1034, Burglary-Resistant Electric Locking Mechanisms.)
- BHMA Standard 501, Grade 1 Electric Strike.
- Fits Standard ANSI A115.1 Frame cutout—with slight modification to face of frame.
- Finish—US32 or US32D.



Options

- LBM—A switch to monitor the latchbolt.
- LCM—A switch to monitor the locking cam.
- LBMLCM—Two switches wired in series, one to monitor the latchbolt and the other to monitor the locking cam.
- LCMA—This is the same as LCM, with an additional switch activated by the latchbolt, for auxiliary purposes.
- Solenoid Operating Voltages:
AC Voltages-6, 12, 16, 24, 48 or 120 VAC
DC Voltages-6, 12, 16, 24, 48 or 120 VDC.
- Fail-Safe Operation—Specify "FS".
- Extended Lip on Faceplate—When strike is used in a door frame having a deep rabbet, an extension may be added to the existing lip on the faceplate, forming a path for the latchbolt. An additional 2" long lip is available in increments of 1/4". (Standard strike has a 1/2" long lip on faceplate.) Specify "EL" x length desired.
- Accessories Available—Plug Connector, specify "PC".
Mounting Tabs and Astragal.

How to Order: (example)

722 x 24 VDC x LCMA x US32D

730 Electric Strike

Locking mechanism only—with-out faceplate. For use with custom applications or as replacement. Ideal for wood-frame applications.

Features

- Corrosion Resistant Metals—Stainless steel case and working parts, stainless steel springs. Tamper-resistant, heavy-duty construction.
- Non-Fail-Safe—Unlocks when energized.
- Solenoid Actuated. May be energized continuously when unlocked.
- Keeper Depth—1/2" standard.
- Reversible—Non-handed.
- Built-in Strain Relief.
- Horizontal Adjustment—to compensate for misalignment.
- Listed by Underwriters' Laboratories, Inc.—Burglary-Resistant Electric Door Strike. (UL Standard No. 1034, Burglary-Resistant Electric Locking Mechanisms.)



Options

- LBM—A switch to monitor the latchbolt.
- LCM—A switch to monitor the locking cam.
- LBMLCM—Two switches wired in series, one to monitor the latchbolt and the other to monitor the locking cam.
- LCMA—This is the same as LCM, with an additional switch activated by the latchbolt, for auxiliary purposes.
- Solenoid Operating Voltages:
AC Voltages-6, 12, 16, 24, 48 or 120 VAC
DC Voltages-6, 12, 16, 24, 48 or 120 VDC.
- Fail-Safe Operation—Specify "FS".
- Accessories Available—Plug Connector, specify "PC".

How to Order: (example)

730 x 24 VDC x LCMA



732 Electric Strike

For use with locks having 1/2" or 5/8" bolt throw (without deadbolts) and with mortise exit devices—wood frame applications.



Features

- Corrosion Resistant Metals—Brass or cast stainless steel faceplate, stainless steel case and working parts, stainless steel springs. Tamper-resistant, heavy-duty construction.
- Non-Fail-Safe—Unlocks when energized.
- Solenoid Actuated. May be energized continuously when unlocked.
- Keeper Depth—1/2" standard.
- Reversible—Non-handed.
- Built-in Strain Relief.
- Horizontal Adjustment—to compensate for misalignment.
- UL Listed—Electric Strike for Fire Door. (UL Standard No. 10B, Fire Tests of door assemblies—Class A, 3-Hour, single-swing doors.)
- Fits Standard ANSI A115.1 Frame cutout—with slight modification to face of frame.
- Finishes Available: US4, US10, US10B, US26, US26D, US32D.

Options

- LBM—A switch to monitor the latchbolt.
- LCM—A switch to monitor the locking cam.
- LBMLCM—Two switches wired in series, one to monitor the latchbolt and the other to monitor the locking cam.
- LCMA—This is the same as LCM, with an additional switch activated by the latchbolt, for auxiliary purposes.
- Solenoid Operating Voltages:
AC Voltages-6, 12, 16, 24, 48 or 120 VAC
DC Voltages-6, 12, 16, 24, 48 or 120 VDC.
- Fail-Safe Operation—Specify "FS".
- Extended Lip on Faceplate—When strike is used in a door frame having a deep rabbet, an extension may be added to the existing lip on the faceplate, forming a path for the latchbolt. An additional 2" long lip is available in increments of 1/4". (Standard strike has a 1/2" long lip on faceplate.) Specify "EL" x length desired.
- Accessories Available—Plug Connector, specify "PC". Mounting Tabs and Astragal.

How to Order: (example)
732 x 24 VDC x LCMA x US4

710-75 Electric Strike

Locking mechanism only—without faceplate. For use with custom applications or as replacements.



Features

- Corrosion Resistant Metals—Stainless steel case, and working parts, stainless steel springs. Tamper-resistant, heavy-duty construction.
- Non-Fail-Safe—Unlocks when energized.
- Solenoid Actuated. May be energized continuously when unlocked.
- Keeper Depth—3/4".
- Reversible—Non-handed.
- Built-in Strain Relief.
- Horizontal Adjustment—to compensate for misalignment.
- Listed by Underwriters' Laboratories, Inc.—Burglary-Resistant Electric Door Strike. (UL Standard No. 1034, Burglary-Resistant Electric Locking Mechanisms.)

Options

- 1/2LBM—A switch to monitor a 1/2" or 5/8"-throw latchbolt.
- 3/4LBM—A switch to monitor a 3/4"-throw latchbolt.
- LCM—A switch to monitor the locking cam.
- 1/2LBMLCM—A switch to monitor a 1/2" or 5/8"-throw latchbolt and locking cam.
- 3/4LBMLCM—A switch to monitor a 3/4"-throw latchbolt and locking cam.
- 1/2LCBMA—This is the same as 1/2LBMLCM, with an additional switch activated by the latchbolt, for auxiliary purposes.
- 3/4LCBMA—This is the same as 3/4LBMLCM, with an additional switch activated by the latchbolt, for auxiliary purposes.
- Solenoid Operating Voltages:
AC Voltages-6, 12, 16, 24, 48 or 120 VAC
DC Voltages-6, 12, 16, 24, 48 or 120 VDC.
- Fail-Safe Operation—Specify "FS".
- Accessories Available—Plug Connector, specify "PC".

How to Order: (example)
710-75 x 24 VDC x 3/4LCBMA



712-75 Electric Strike

For use with locks having 1/2", 5/8" or 3/4" bolt throw (without deadbolts) and with mortise exit devices—specially designed for hollow-metal frame applications.

Features

- Corrosion Resistant Metals—Cast stainless steel or brass faceplate, stainless steel case and working parts, stainless steel springs. Tamper-resistant, heavy-duty construction.
- Non-Fail-Safe—Unlocks when energized.
- Solenoid Actuated. May be energized continuously when unlocked.
- Keeper Depth—3/4".
- Reversible—Non-handed.
- Built-in Strain Relief.
- Horizontal Adjustment—to compensate for misalignment.
- UL Listed—Electric Strike for Fire Door. (UL Standard No. 10B, Fire Tests of door assemblies—Class A, 3-Hr, single-swing doors.)
- Listed by Underwriters' Laboratories, Inc.—Burglary-Resistant Electric Door Strike. (UL Standard No. 1034, Burglary-Resistant Electric Locking Mechanisms.)
- BHMA Standard 501, Grade 1 Electric Strike.
- Fits Standard ANSI A115.1 Frame cutout—with slight modification to face of frame.
- Finishes Available: US4, US10, US10B, US26, US26D, US32D.

Options

- 1/2LBM—A switch to monitor a 1/2" or 5/8"-throw latchbolt.
- 3/4LBM—A switch to monitor a 3/4"-throw latchbolt.
- LCM—A switch to monitor the locking cam.
- 1/2LBMLCM—A switch to monitor a 1/2" or 5/8"-throw latchbolt and locking cam.
- 3/4LBMLCM—A switch to monitor a 3/4"-throw latchbolt and locking cam.
- 1/2LCBMA—This is the same as 1/2LBMLCM, with an additional switch activated by the latchbolt, for auxiliary purposes.
- 3/4LCBMA—This is the same as 3/4LBMLCM, with an additional switch activated by the latchbolt, for auxiliary purposes.
- Solenoid Operating Voltages:
AC Voltages-6, 12, 16, 24, 48 or 120 VAC
DC Voltages-6, 12, 16, 24, 48 or 120 VDC.
- Fail-Safe Operation—Specify "FS".
- Extended Lip on Faceplate—Specify "EL" x length desired.
- Accessories Available—Plug Connector, specify "PC".

How to Order: (example)

712-75 x 24 VDC x 3/4LCBMA



722-75 Electric Strike

For use with locks having 1/2", 5/8" or 3/4" bolt throw (without deadbolts) and with mortise exit devices—specially designed for aluminum frame applications.

Features

- Corrosion Resistant Metals—Cast stainless steel faceplate, case and working parts, stainless steel springs. Tamper-resistant, heavy-duty construction.
- Non-Fail-Safe—Unlocks when energized.
- Solenoid Actuated. May be energized continuously when unlocked.
- Keeper Depth—3/4".
- Reversible—Non-handed.
- Built-in Strain Relief.
- Horizontal Adjustment—to compensate for misalignment.
- UL Listed—Electric Strike for Fire Door. (UL Standard No. 10B, Fire Tests of door assemblies—Class A, 3-Hr, single-swing doors.)
- Listed by Underwriters' Laboratories, Inc.—Burglary-Resistant Electric Door Strike. (UL Standard No. 1034, Burglary-Resistant Electric Locking Mechanisms.)
- BHMA Standard 501, Grade 1 Electric Strike.
- Fits Standard ANSI A115.1 Frame cutout—with slight modification to face of frame.
- Finish—US32D.



Options

- 1/2LBM—A switch to monitor a 1/2" or 5/8"-throw latchbolt.
- 3/4LBM—A switch to monitor a 3/4"-throw latchbolt.
- LCM—A switch to monitor the locking cam.
- 1/2LBMLCM—A switch to monitor a 1/2" or 5/8"-throw latchbolt and locking cam.
- 3/4LBMLCM—A switch to monitor a 3/4"-throw latchbolt and locking cam.
- 1/2LCBMA—This is the same as 1/2LBMLCM, with an additional switch activated by the latchbolt, for auxiliary purposes.
- 3/4LCBMA—This is the same as 3/4LBMLCM, with an additional switch activated by the latchbolt, for auxiliary purposes.
- Solenoid Operating Voltages:
AC Voltages-6, 12, 16, 24, 48 or 120 VAC
DC Voltages-6, 12, 16, 24, 48 or 120 VDC.
- Fail-Safe Operation—Specify "FS".
- Extended Lip on Faceplate—Specify "EL" x length desired.
- Accessories Available—Plug Connector, specify "PC".

How to Order: (example)

722-75 x 24 VDC x 3/4LCBMA x US32D



**730-75
Electric Strike**

Locking mechanism only—without faceplate. For use with custom applications or as replacements.



Features

- Corrosion Resistant metals—tamper-resistant, heavy-duty construction.
- Non-Fail-Safe—Unlocks when energized.
- Solenoid Actuated—May be energized continuously when unlocked.
- Listed by Underwriters' Laboratories, Inc.—Burglary-Resistant Electric Door Strike. (UL Standard No. 1034, Burglary-Resistant Electric Locking Mechanisms.)
- BHMA Standard 501, Grade 1 Electric Strike.
- Keeper Depth—3/4".
- Reversible—Non-handed.
- Built-in Strain Relief.
- Horizontal Adjustment—to compensate for misalignment.

Options

- 1/2LBM—A switch to monitor a 1/2" or 5/8"-throw latchbolt.
- 3/4LBM—A switch to monitor a 3/4"-throw latchbolt.
- LCM—A switch to monitor the locking cam.
- 1/2LBMLCM—A switch to monitor a 1/2" or 5/8"-throw latchbolt and locking cam.
- 3/4LBMLCM—A switch to monitor a 3/4"-throw latchbolt and locking cam.
- 1/2LCBMA—This is the same as 1/2LBMLCM, with an additional switch activated by the latchbolt, for auxiliary purposes.
- 3/4LCBMA—This is the same as 3/4LBMLCM, with an additional switch activated by the latchbolt, for auxiliary purposes.
- Solenoid Operating Voltages:
AC Voltages-6, 12, 16, 24, 48 or 120 VAC
DC Voltages-6, 12, 16, 24, 48 or 120 VDC.
- Fail-Safe Operation—Specify "FS".
- Accessories Available—Plug Connector, specify "PC".

How to Order: (example)
730-75 x 24 VDC x 3/4LCBMA

**732-75
Electric Strike**

For use with locks having 1/2", 5/8" or 3/4" bolt throw (without deadbolts) and with mortise exit devices—specially designed for wood-frame applications.



Features

- Corrosion Resistant Metals—Cast stainless steel faceplate, case and working parts. Tamper-resistant, heavy-duty construction.
- Non-Fail-Safe—Unlocks when energized.
- Solenoid Actuated. May be energized continuously when unlocked.
- Keeper Depth—3/4".
- Reversible—Non-handed.
- Built-in Strain Relief.
- Horizontal Adjustment—to compensate for misalignment.
- UL Listed—Electric Strike for Fire Door. (UL Standard No. 10B, Fire Tests of door assemblies—Class A, 3-Hr, single-swing doors.)
- Listed by Underwriters' Laboratories, Inc.—Burglary-Resistant Electric Door Strike. (UL Standard No. 1034, Burglary-Resistant Electric Locking Mechanisms.)
- BHMA Standard 501, Grade 1 Electric Strike.
- Fits Standard ANSI A115.1 Frame cutout—with slight modification to face of frame.

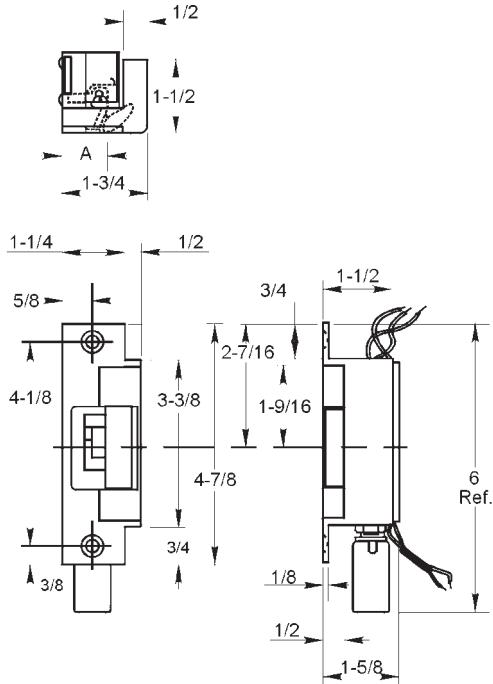
Options

- 1/2LBM—A switch to monitor a 1/2" or 5/8"-throw latchbolt.
- 3/4LBM—A switch to monitor a 3/4"-throw latchbolt.
- LCM—A switch to monitor the locking cam.
- 1/2LBMLCM—A switch to monitor a 1/2" or 5/8"-throw latchbolt and locking cam.
- 3/4LBMLCM—A switch to monitor a 3/4"-throw latchbolt and locking cam.
- 1/2LCBMA—This is the same as 1/2LBMLCM, with an additional switch activated by the latchbolt, for auxiliary purposes.
- 3/4LCBMA—This is the same as 3/4LBMLCM, with an additional switch activated by the latchbolt, for auxiliary purposes.
- Solenoid Operating Voltages:
AC Voltages-6, 12, 16, 24, 48 or 120 VAC
DC Voltages-6, 12, 16, 24, 48 or 120 VDC.
- Fail-Safe Operation—Specify "FS".
- Extended Lip on Faceplate—Specify "EL" x length desired.
- Accessories Available—Plug Connector, specify "PC".

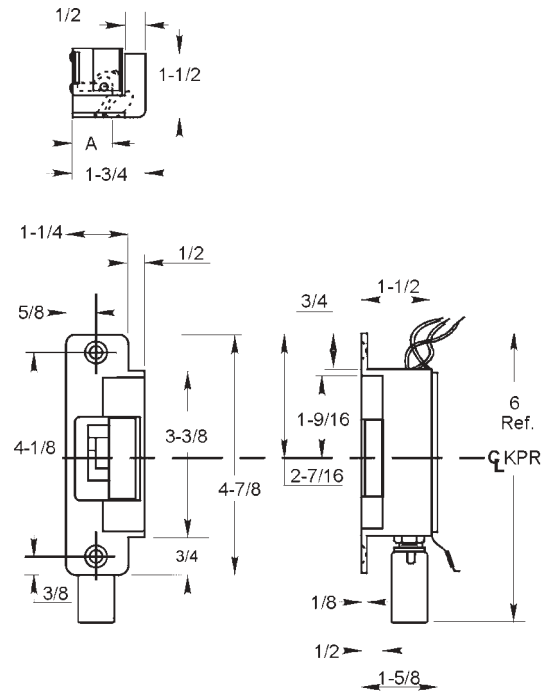
How to Order: (example)
732-75 x 24 VDC x 3/4LCBMA x US4



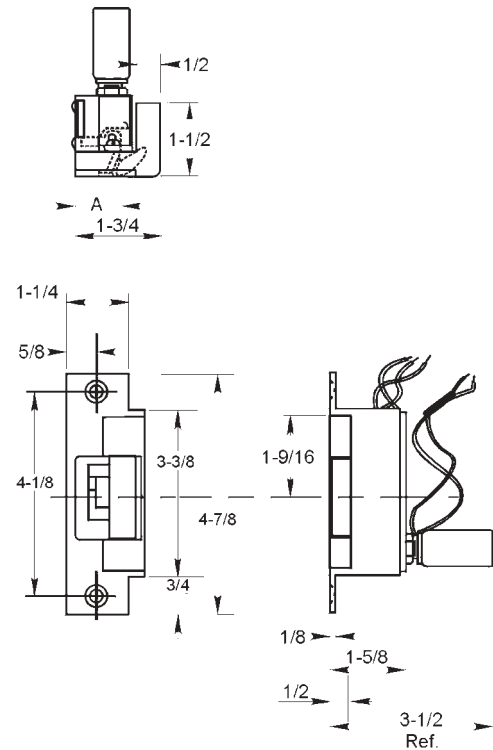
Electric Strike Dimension Drawings



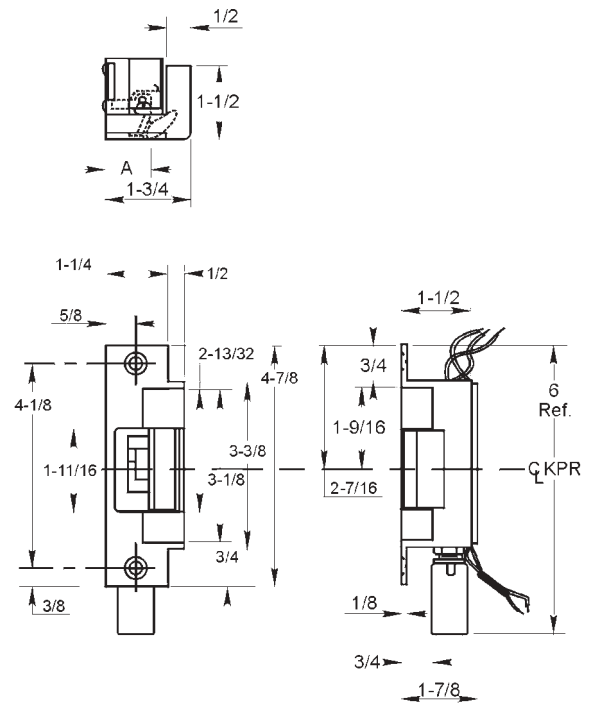
712 Electric Strike



722 Electric Strike



732 Electric Strike



712-75 Electric Strike